

**SIOUX COUNTY, IOWA
GPS CONTROL MONUMENT
IOWA NORTH ZONE (1401)
HORIZONTAL DATUM - NAD 83 (1996)
VERTICAL DATUM - NAVD 1988**

GPS POINT NUMBER **G178**

	US SURVEY FEET	METRIC
Northing:	3902528.276	1189492.998
Easting:	4165562.600	1269666.020
Elevation:	1347.438	410.700
Ellipsoid Height:	1260.916	384.328
Geoid 99 Height:	-86.522	-26.372

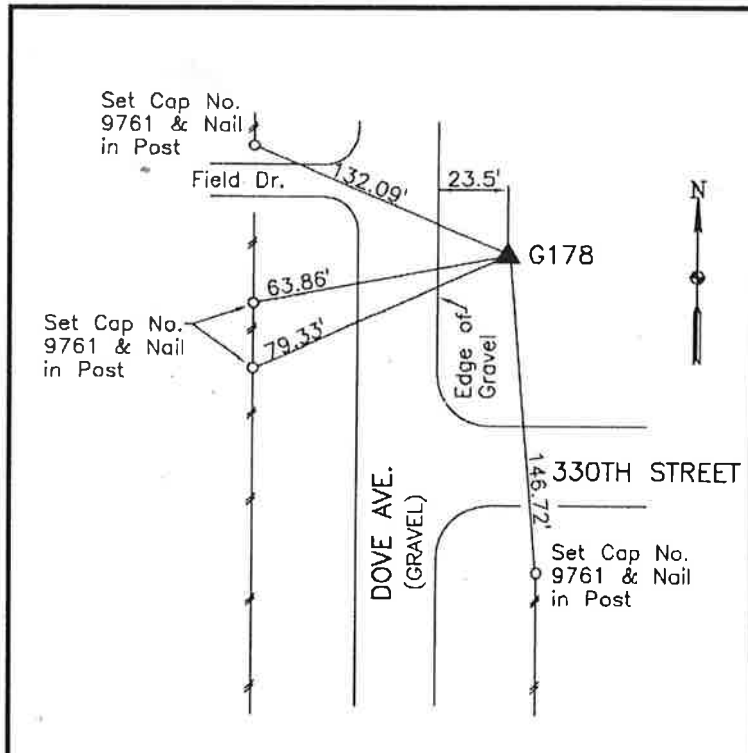
Latitude:	43° 10' 16.21941" N
Longitude:	96° 19' 59.57580" W
Scale Factor:	0.9999839490
Convergence:	-1° 55' 12.7"
Combined Factor:	0.99992379

Description:

Placed 3/4" X 6' - 0" Long
Aluminum Rod with Cap
Stamped G178 and NGS Style
Access Cover 1" Deep

Location:

Northeast side of intersection
of Dove Avenue and 330th
Street in Section 31, T97N,
R46W.



WHKS & CO.