

**SIOUX COUNTY, IOWA
GPS CONTROL MONUMENT
IOWA NORTH ZONE (1401)
HORIZONTAL DATUM - NAD 83 (1996)
VERTICAL DATUM - NAVD 1988**

GPS POINT NUMBER **G179**

	US SURVEY FEET	METRIC
Northing:	3902874.556	1189598.544
Easting:	4149796.131	1264860.390
Elevation:	1212.862	369.681
Ellipsoid Height:	1126.476	343.351
Geoid 99 Height:	-86.386	-26.331

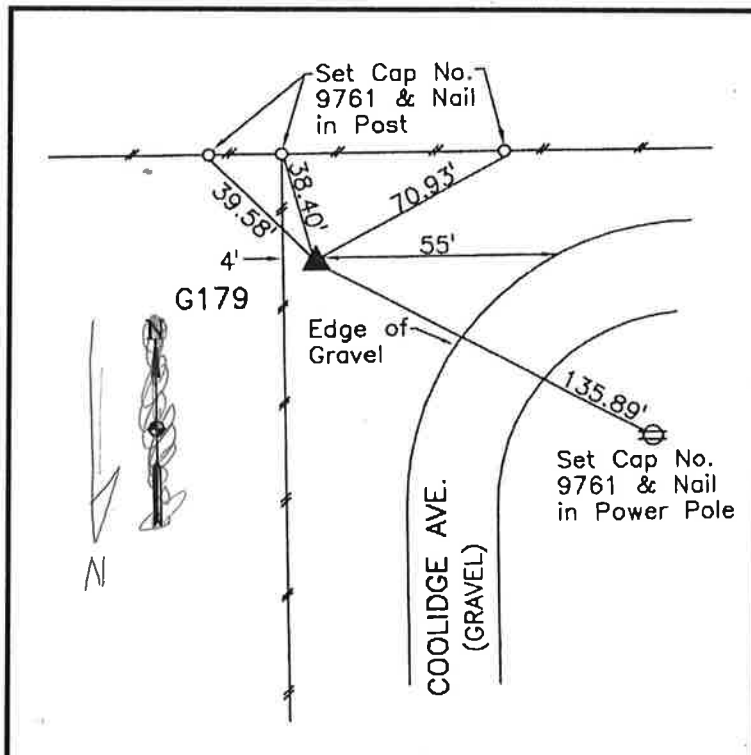
Latitude:	43° 10' 14.36528" N
Longitude:	96° 23' 32.37265" W
Scale Factor:	0.9999838700
Convergence:	-1° 57' 36.9"
Combined Factor:	0.99993013

Description:

Placed 3/4" X 6' - 0" Long
Aluminum Rod with Cap
Stamped G179 and NGS Style
Access Cover 1" Deep

Location:

East side of Coolidge Avenue
1.0 mile south of 320th Street
in Section 34, T97N, R47W.



WHKS & CO.