

**SIOUX COUNTY, IOWA
GPS CONTROL MONUMENT
IOWA NORTH ZONE (1401)
HORIZONTAL DATUM - NAD 83 (1996)
VERTICAL DATUM - NAVD 1988**

GPS POINT NUMBER **G180**

	US SURVEY FEET	METRIC
Northing:	3903422.371	1189765.518
Easting:	4134204.251	1260107.976
Elevation:	1222.877	372.734
Ellipsoid Height:	1136.638	346.448
Geoid 99 Height:	-86.240	-26.286

Latitude: 43° 10' 14.45177" N

Longitude: 96° 27' 02.90625" W

Scale Factor: 0.9999838737

Convergence: -1° 59' 59.6"

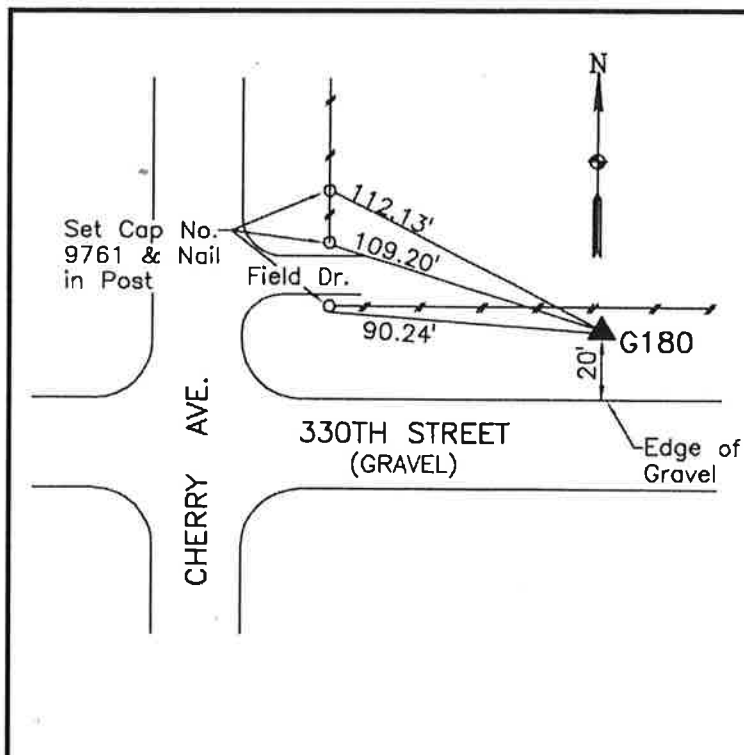
Combined Factor: 0.99992964

Description:

Placed 3/4" X 6' - 0" Long
Aluminum Rod with Cap
Stamped G180 and NGS Style
Access Cover 1" Deep

Location:

Northeast side of intersection
of Cherry Avenue and 330th
Street in Section 31, T97N,
R47W.



WHKS & CO.

G180