

**SIOUX COUNTY, IOWA
GPS CONTROL MONUMENT
IOWA NORTH ZONE (1401)
HORIZONTAL DATUM - NAD 83 (1996)
VERTICAL DATUM - NAVD 1988**

GPS POINT NUMBER **G181**

	US SURVEY FEET	METRIC
Northing:	3926187.260	1196704.270
Easting:	4108540.932	1252285.781
Elevation:	1238.078	377.367
Ellipsoid Height:	1151.785	351.065
Geoid 99 Height:	-86.294	-26.302

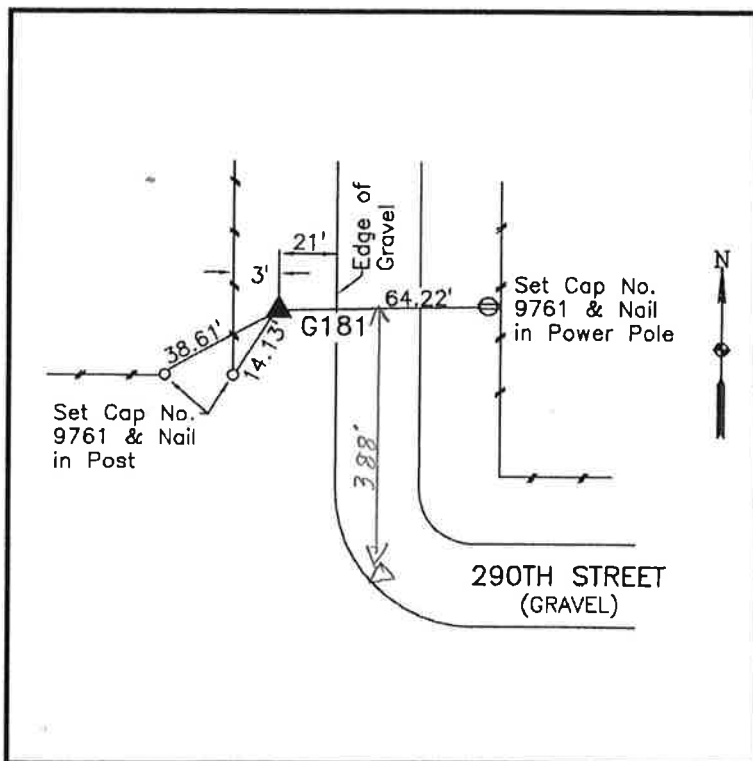
Latitude:	43° 13' 50.16328" N
Longitude:	96° 33' 00.07418" W
Scale Factor:	0.9999936096
Convergence:	-2° 04' 01.7"
Combined Factor:	0.99993866

Description:

Placed 3/4" X 6' - 0" Long
Aluminum Rod with Cap
Stamped G181 and NGS Style
Access Cover 1" Deep

Location:

West side of Arthur Avenue
0.05 mile north of 290th Street
in Section 7, T97N, R48W.



WHKS & CO.