

**SIOUX COUNTY, IOWA
GPS CONTROL MONUMENT
IOWA NORTH ZONE (1401)
HORIZONTAL DATUM - NAD 83 (1996)
VERTICAL DATUM - NAVD 1988**

GPS POINT NUMBER **G182**

	US SURVEY FEET	METRIC
Northing:	3925431.131	1196473.802
Easting:	4119017.270	1255478.975
Elevation:	1260.608	384.234
Ellipsoid Height:	1174.260	357.915
Geoid 99 Height:	-86.349	-26.319

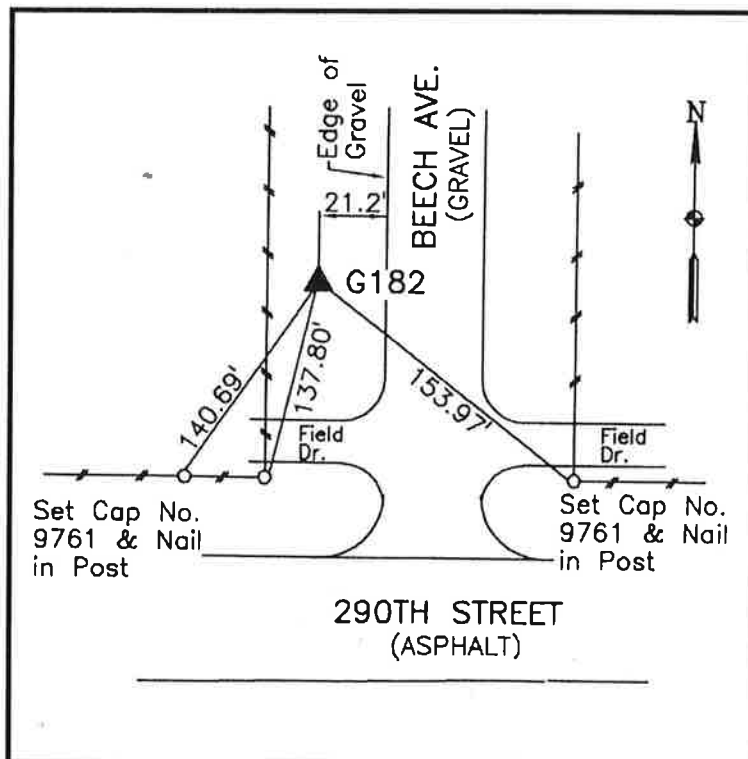
Latitude:	43° 13' 46.40815" N
Longitude:	96° 30' 38.29080" W
Scale Factor:	0.9999934308
Convergence:	-2° 02' 25.6"
Combined Factor:	0.99993741

Description:

Placed 3/4" X 6' - 0" Long
Aluminum Rod with Cap
Stamped G182 and NGS Style
Access Cover 1" Deep

Location:

Northwest side of intersection
of Beech avenue and 290th
street in Section 9, T97N,
R48W.



WHKS & CO.