

**SIOUX COUNTY, IOWA  
GPS CONTROL MONUMENT  
IOWA NORTH ZONE (1401)  
HORIZONTAL DATUM - NAD 83 (1996)  
VERTICAL DATUM - NAVD 1988**

GPS POINT NUMBER **G183**

	US SURVEY FEET	METRIC
Northing:	3919180.816	1194568.702
Easting:	4134423.554	1260174.820
Elevation:	1382.301	421.326
Ellipsoid Height:	1295.898	394.990
Geoid 99 Height:	-86.403	-26.336

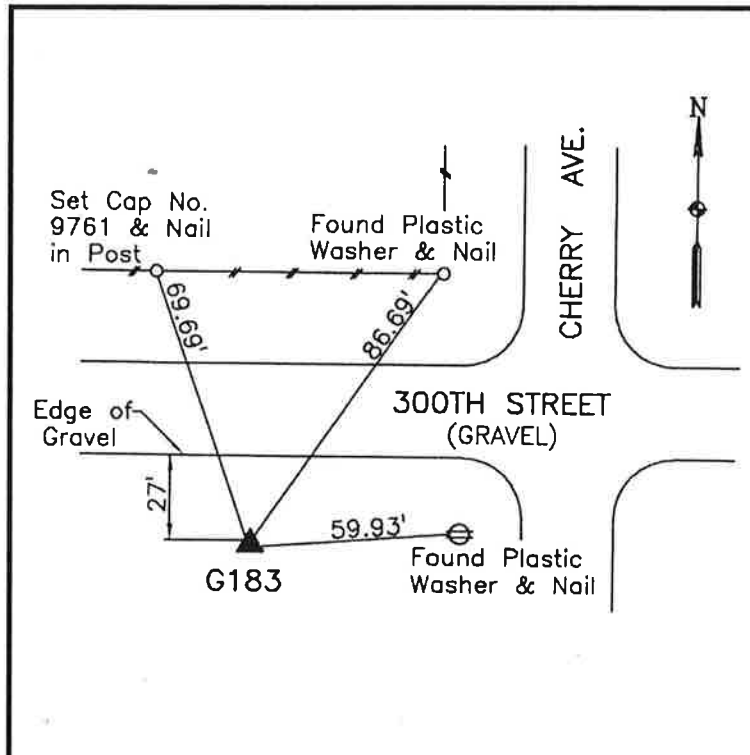
Latitude:	43° 12' 50.07816" N
Longitude:	96° 27' 07.37284" W
Scale Factor:	0.9999907873
Convergence:	-2° 00' 02.6"
Combined Factor:	0.99992896

**Description:**

Placed 3/4" X 6' - 0" Long Aluminum Rod with Cap Stamped G183 and NGS Style Access Cover 1" Deep

**Location:**

Southwest side of intersection of Cherry Avenue and 300th Street in Section 24, T97N, R48W.



**WHKS & CO.**