

**SIOUX COUNTY, IOWA
GPS CONTROL MONUMENT
IOWA NORTH ZONE (1401)
HORIZONTAL DATUM - NAD 83 (1996)
VERTICAL DATUM - NAVD 1988**

GPS POINT NUMBER **G184**

	US SURVEY FEET	METRIC
Northing:	3918515.574	1194365.936
Easting:	4150120.237	1264959.178
Elevation:	1371.765	418.115
Ellipsoid Height:	1285.210	391.733
Geoid 99 Height:	-86.555	-26.382

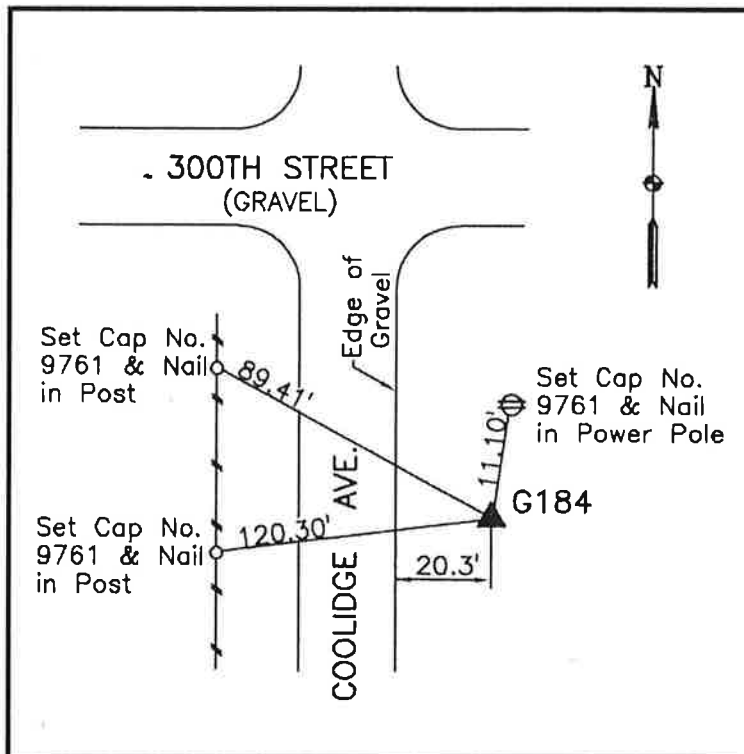
Latitude: 43° 12' 48.87017" N
Longitude: 96° 23' 35.22337" W
Scale Factor: 0.9999907314
Convergence: -1° 57' 38.9"
Combined Factor: 0.99992941

Description:

Placed 3/4" X 6' - 0" Long
Aluminum Rod with Cap
Stamped G184 and NGS Style
Access Cover 1" Deep

Location:

Southeast side of intersection
of Coolidge Avenue and 300th
Street in Section 22, T97N,
R47W.



WHKS & CO.