

**SIOUX COUNTY, IOWA  
GPS CONTROL MONUMENT  
IOWA NORTH ZONE (1401)  
HORIZONTAL DATUM - NAD 83 (1996)  
VERTICAL DATUM - NAVD 1988**

GPS POINT NUMBER      **G185**

	US SURVEY FEET	METRIC
Northing:	3918292.075	1194297.813
Easting:	4165880.138	1269762.806
Elevation:	1282.682	390.962
Ellipsoid Height:	1195.979	364.535
Geoid 99 Height:	-86.703	-26.427

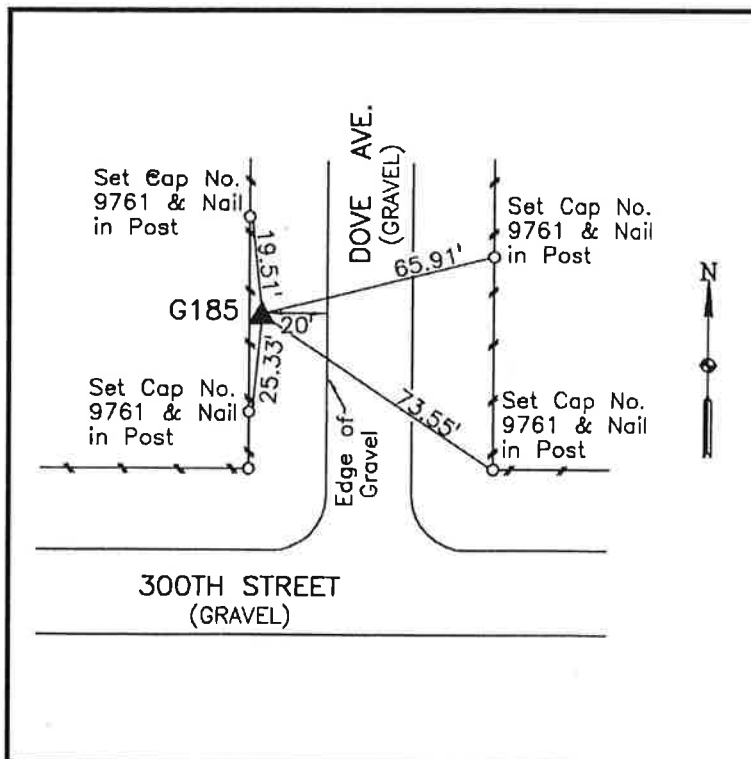
Latitude:	43° 12' 51.93553" N
Longitude:	96° 20' 02.42305" W
Scale Factor:	0.9999908732
Convergence:	-1° 55' 14.6"
Combined Factor:	0.99993381

**Description:**

Placed 3/4" X 6' - 0" Long  
Aluminum Rod with Cap  
Stamped G185 and NGS Style  
Access Cover 1" Deep

**Location:**

Northwest side of intersection  
of Dove Avenue and 300th  
Street in Section 13, T97N,  
R47W.



**WHKS & CO.**