

**SIoux COUNTY, IOWA
GPS CONTROL MONUMENT
IOWA NORTH ZONE (1401)
HORIZONTAL DATUM - NAD 83 (1996)
VERTICAL DATUM - NAVD 1988**

GPS POINT NUMBER **G186**

	US SURVEY FEET	METRIC
Northing:	3917924.245	1194185.698
Easting:	4181986.444	1274672.018
Elevation:	1242.189	378.620
Ellipsoid Height:	1155.360	352.154
Geoid 99 Height:	-86.829	-26.465

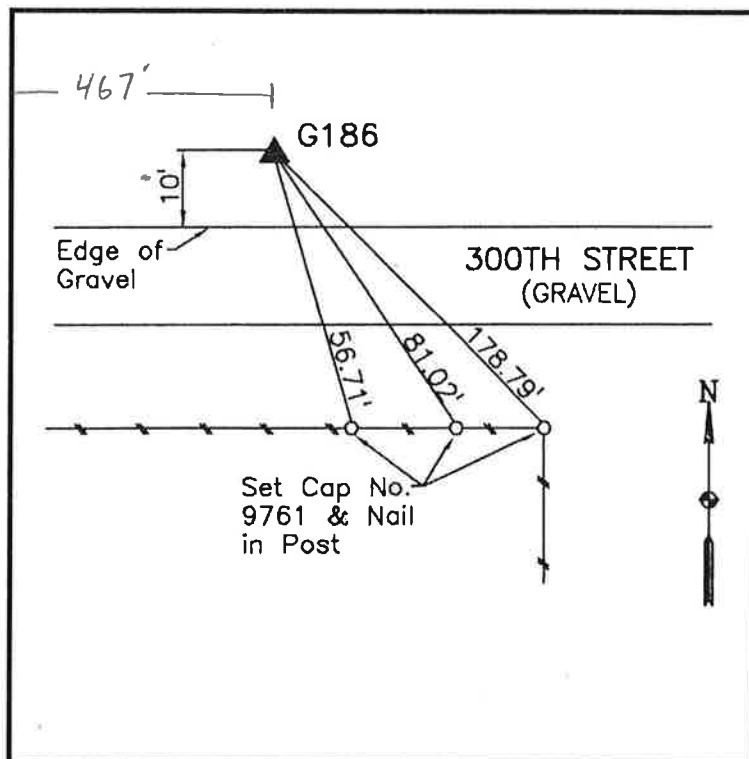
Latitude:	43° 12' 53.57955" N
Longitude:	96° 16' 24.87763" W
Scale Factor:	0.9999909494
Convergence:	-1° 52' 47.2"
Combined Factor:	0.99993583

Description:

Placed 3/4" X 6' - 0" Long Aluminum Rod with Cap Stamped G186 and NGS Style Access Cover 4" Deep

Location:

North side 300th Street 0.1 mile east of Fig Avenue in Section 15, T97N, R46W.



WHKS & CO.