

SIoux COUNTY, IOWA
GPS CONTROL MONUMENT
IOWA NORTH ZONE (1401)
HORIZONTAL DATUM - NAD 83 (1996)
VERTICAL DATUM - NAVD 1988

GPS POINT NUMBER **G187**

	US SURVEY FEET	METRIC
Northing:	3917404.502	1194027.280
Easting:	4197153.549	1279294.960
Elevation:	1393.667	424.791
Ellipsoid Height:	1306.746	398.297
Geoid 99 Height:	-86.921	-26.494

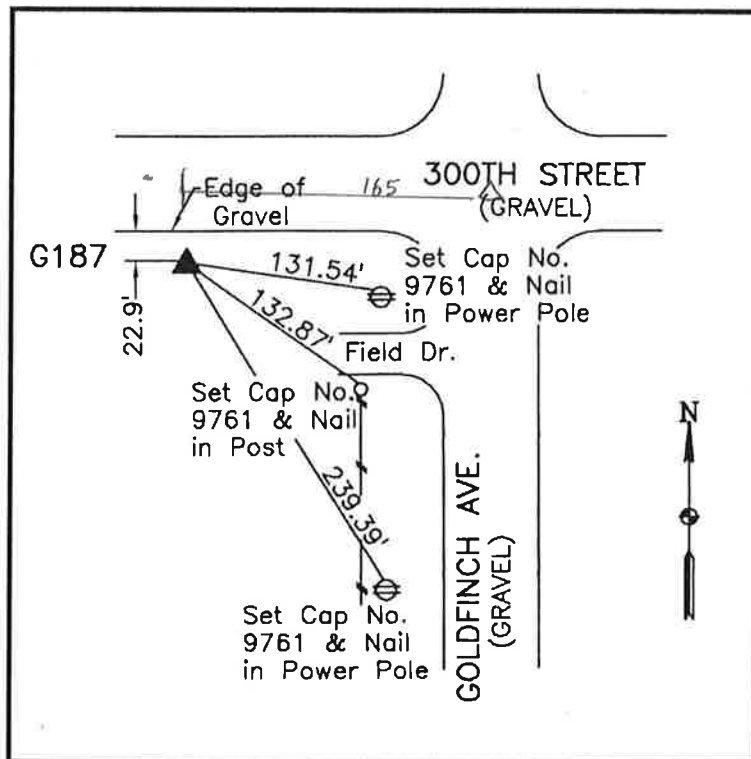
Latitude:	43° 12' 53.31234" N
Longitude:	96° 12' 59.93980" W
Scale Factor:	0.9999909370
Convergence:	-1° 50' 28.3"
Combined Factor:	0.99992859

Description:

Placed 3/4" X 6' - 0" Long
 Aluminum Rod with Cap
 Stamped G187 and NGS Style
 Access Cover 1" Deep

Location:

Southwest side of intersection
 of Goldfinch Avenue and 300th
 Street in Section 24, T97N,
 R46W.



WHKS & CO.