

**SIOUX COUNTY, IOWA**  
**GPS CONTROL MONUMENT**  
**IOWA NORTH ZONE (1401)**  
**HORIZONTAL DATUM - NAD 83 (1996)**  
**VERTICAL DATUM - NAVD 1988**

GPS POINT NUMBER      **G188**

	US SURVEY FEET	METRIC
Northing:	3916690.827	1193809.752
Easting:	4212877.448	1284087.614
Elevation:	1420.623	433.007
Ellipsoid Height:	1333.578	406.475
Geoid 99 Height:	-87.044	-26.531

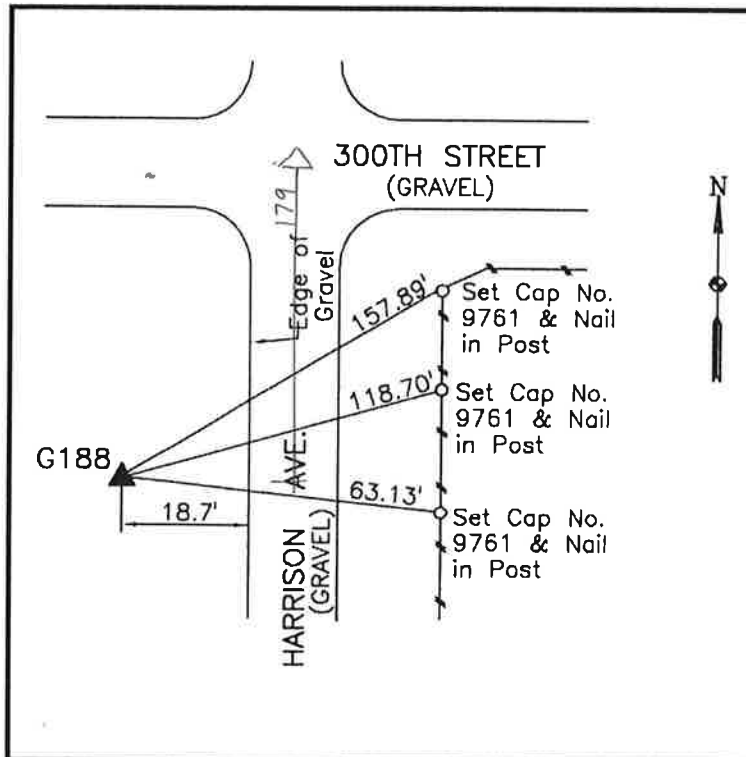
Latitude:                    43° 12' 51.20260" N  
Longitude:                   96° 09' 27.40498" W  
Scale Factor:                0.9999908393  
Convergence:               -1° 48' 04.3"  
Combined Factor:            0.99992721

**Description:**

Placed 3/4" X 6' - 0" Long  
Aluminum Rod with Cap  
Stamped G188 and NGS Style  
Access Cover 1" Deep

**Location:**

Southwest side of intersection  
of Harrison Avenue and 300th  
Street in Section 21, T97N,  
R45W.



**WHKS & CO.**