

**SIOUX COUNTY, IOWA  
GPS CONTROL MONUMENT  
IOWA NORTH ZONE (1401)  
HORIZONTAL DATUM - NAD 83 (1996)  
VERTICAL DATUM - NAVD 1988**

GPS POINT NUMBER **G190**

	US SURVEY FEET	METRIC
Northing:	3916154.757	1193646.357
Easting:	4244062.889	1293592.956
Elevation:	1435.571	437.563
Ellipsoid Height:	1348.164	410.921
Geoid 99 Height:	-87.406	-26.641

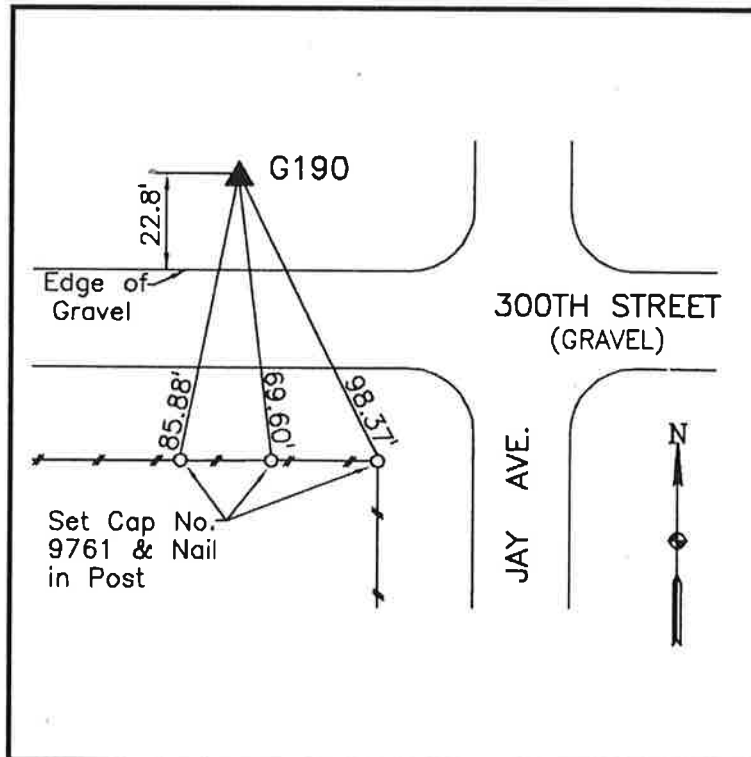
Latitude:	43° 12' 55.37873" N
Longitude:	96° 02' 26.25078" W
Scale Factor:	0.9999910328
Convergence:	-1° 43' 18.8"
Combined Factor:	0.99992671

Description:

Placed 3/4" X 6' - 0" Long  
Aluminum Rod with Cap  
Stamped G190 and NGS Style  
Access Cover 1" Deep

Location:

Northwest side of intersection  
of Jay Avenue and 300th  
Street in Section 19, T97N,  
R44W.



**WHKS & CO.**