

**SIOUX COUNTY, IOWA
GPS CONTROL MONUMENT
IOWA NORTH ZONE (1401)
HORIZONTAL DATUM - NAD 83 (1996)
VERTICAL DATUM - NAVD 1988**

GPS POINT NUMBER **G191**

	US SURVEY FEET	METRIC
Northing:	3915703.413	1193508.787
Easting:	4259891.596	1298417.555
Elevation:	1405.912	428.523
Ellipsoid Height:	1318.302	401.819
Geoid 99 Height:	-87.610	-26.704

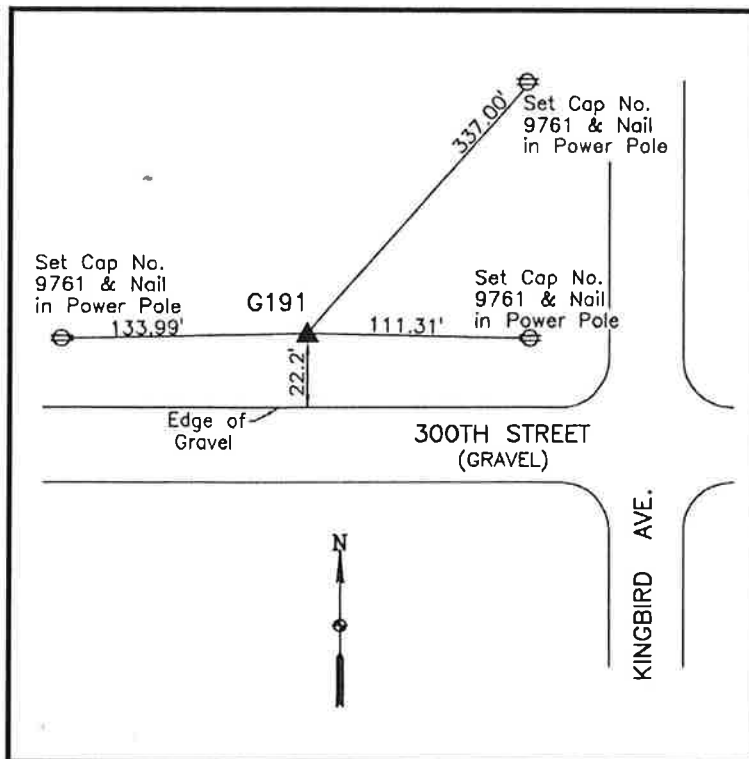
Latitude:	43° 12' 55.56560" N
Longitude:	95° 58' 52.40984" W
Scale Factor:	0.9999910415
Convergence:	-1° 40' 53.9"
Combined Factor:	0.99992815

Description:

Placed 3/4" X 6' - 0" Long Aluminum Rod with Cap Stamped G191 and NGS Style Access Cover 2" Deep

Location:

Northwest side of intersection of Kingbird avenue and 300th Street in Section 13, T97N, R44W.



WHKS & CO.