

**SIoux COUNTY, IOWA
GPS CONTROL MONUMENT
IOWA NORTH ZONE (1401)
HORIZONTAL DATUM - NAD 83 (1996)
VERTICAL DATUM - NAVD 1988**

GPS POINT NUMBER **G192**

	US SURVEY FEET	METRIC
Northing:	3914946.405	1193278.051
Easting:	4275765.486	1303255.927
Elevation:	1420.008	432.819
Ellipsoid Height:	1332.162	406.044
Geoid 99 Height:	-87.846	-26.775

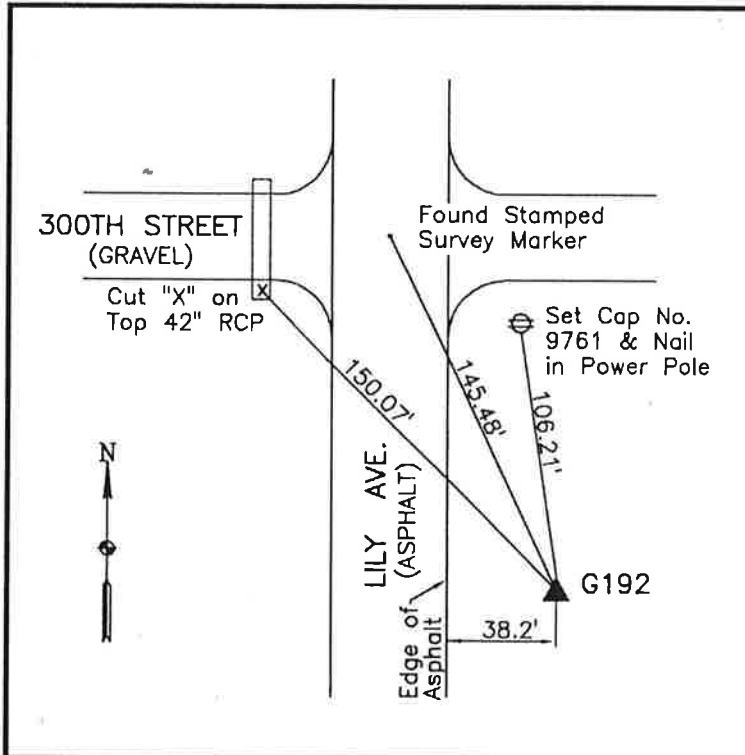
Latitude:	43° 12' 52.63761" N
Longitude:	95° 55' 17.84052" W
Scale Factor:	0.9999909057
Convergence:	-1° 38' 28.5"
Combined Factor:	0.99992735

Description:

Placed 3/4" X 6' - 0" Long Aluminum Rod with Cap Stamped G192 and NGS Style Access Cover 2" Deep

Location:

Southeast side of intersection of Lily Avenue and 300th Street in Section 22, T97N, R43W.



WHKS & CO.