

SIoux COUNTY, IOWA
GPS CONTROL MONUMENT
IOWA NORTH ZONE (1401)
HORIZONTAL DATUM - NAD 83 (1996)
VERTICAL DATUM - NAVD 1988

GPS POINT NUMBER **G193**

	US SURVEY FEET	METRIC
Northing:	3914673.281	1193194.802
Easting:	4290176.972	1307648.556
Elevation:	1420.262	432.897
Ellipsoid Height:	1332.161	406.043
Geoid 99 Height:	-88.101	-26.853

Latitude: 43° 12' 53.97237" N

Longitude: 95° 52' 03.20026" W

Scale Factor: 0.9999909676

Convergence: -1° 36' 16.6"

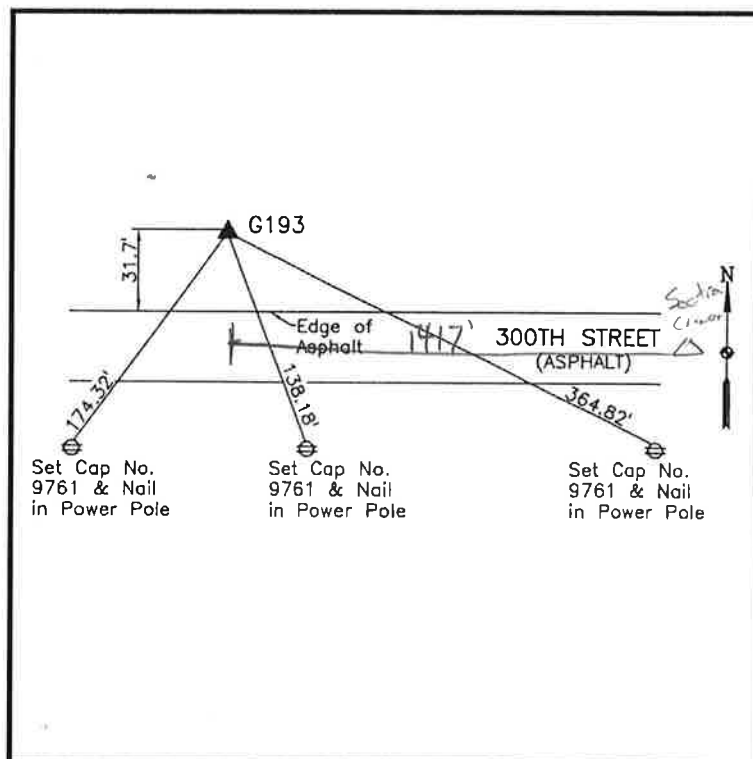
Combined Factor: 0.99992741

Description:

Placed 3/4" X 6' - 0" Long
 Aluminum Rod with Cap
 Stamped G193 and NGS Style
 Access Cover 1" Deep

Location:

North side 300th Street 0.3
 mile west of McKinley Avenue
 east county line in Section 13,
 T97N, R43W.



WHKS & CO.

G193