

**SIoux COUNTY, IOWA  
GPS CONTROL MONUMENT  
IOWA NORTH ZONE (1401)  
HORIZONTAL DATUM - NAD 83 (1996)  
VERTICAL DATUM - NAVD 1988**

GPS POINT NUMBER **G194**

	US SURVEY FEET	METRIC
Northing:	3928847.279	1197515.046
Easting:	4292012.119	1308207.910
Elevation:	1412.521	430.537
Ellipsoid Height:	1324.550	403.724
Geoid 99 Height:	-87.971	-26.814

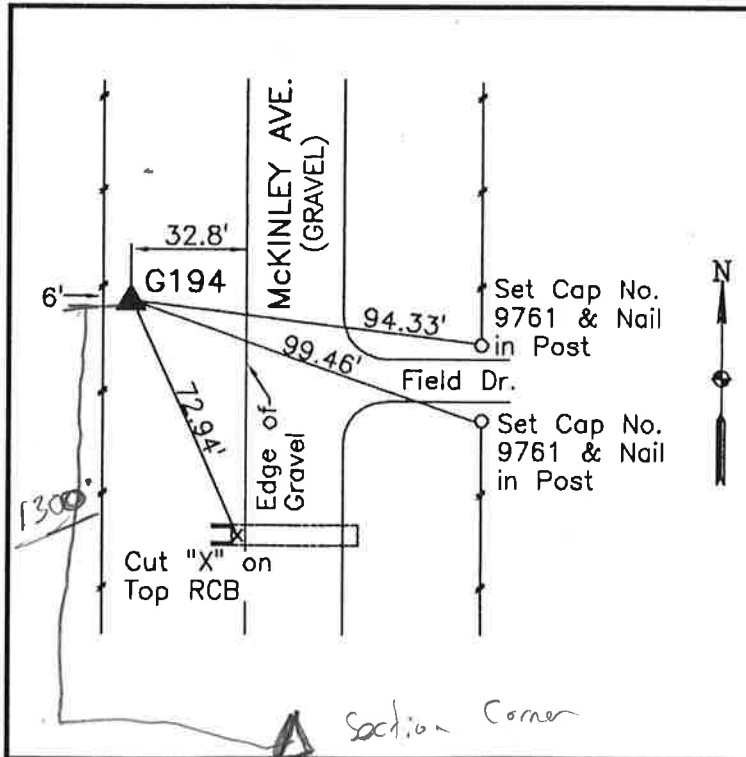
Latitude:	43° 15' 14.41864" N
Longitude:	95° 51' 43.77544" W
Scale Factor:	0.9999977111
Convergence:	-1° 36' 03.4"
Combined Factor:	0.99993452

**Description:**

Placed 3/4" X 6' - 0" Long  
Aluminum Rod with Cap  
Stamped G194 and NGS Style  
Access Cover 2" Deep

**Location:**

West side McKinley Avenue  
0.8 mile north of 280th Street  
east county line in Section 1,  
T97N, R43W.



**WHKS & CO.**