

**SIoux COUNTY, IOWA
GPS CONTROL MONUMENT
IOWA NORTH ZONE (1401)
HORIZONTAL DATUM - NAD 83 (1996)
VERTICAL DATUM - NAVD 1988**

GPS POINT NUMBER **G195**

	US SURVEY FEET	METRIC
Northing:	3930618.759	1198054.994
Easting:	4276279.742	1303412.672
Elevation:	1412.743	430.605
Ellipsoid Height:	1325.022	403.868
Geoid 99 Height:	-87.721	-26.737

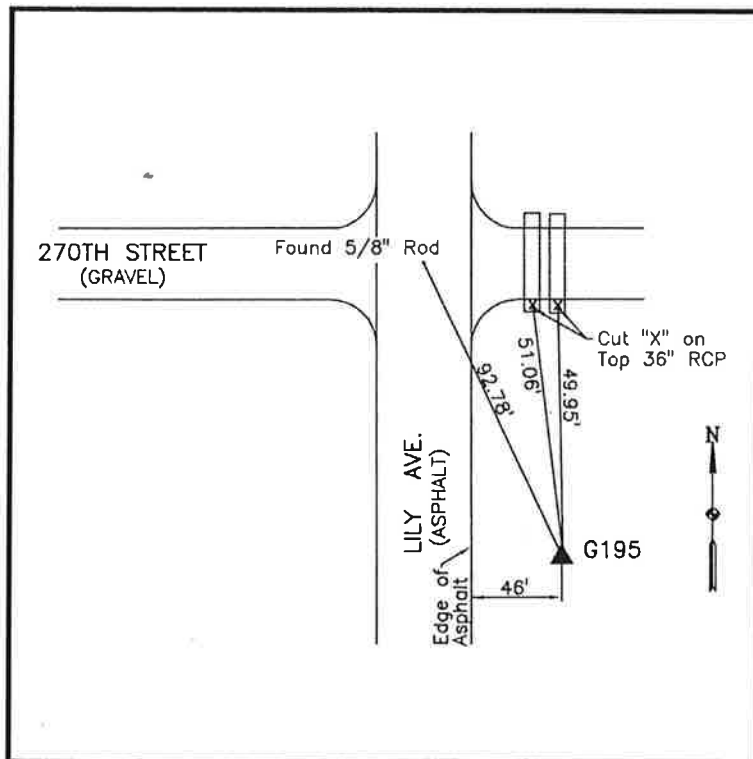
Latitude:	43° 15' 27.51256" N
Longitude:	95° 55' 16.95983" W
Scale Factor:	0.9999983636
Convergence:	-1° 38' 27.9"
Combined Factor:	0.99993515

Description:

Placed 3/4" X 6' - 0" Long Aluminum Rod with Cap Stamped G195 and NGS Style Access Cover 2" Deep

Location:

Southeast side of intersection Lily Avenue and 270th Street north county line in Section 3, T97N, R43W.



WHKS & CO.