

**SIoux COUNTY, IOWA**  
**GPS CONTROL MONUMENT**  
**IOWA NORTH ZONE (1401)**  
**HORIZONTAL DATUM - NAD 83 (1996)**  
**VERTICAL DATUM - NAVD 1988**

GPS POINT NUMBER      **G196**

	US SURVEY FEET	METRIC
Northing:	3931097.773	1198200.998
Easting:	4260978.197	1298748.752
Elevation:	1380.305	420.718
Ellipsoid Height:	1292.770	394.037
Geoid 99 Height:	-87.536	-26.681

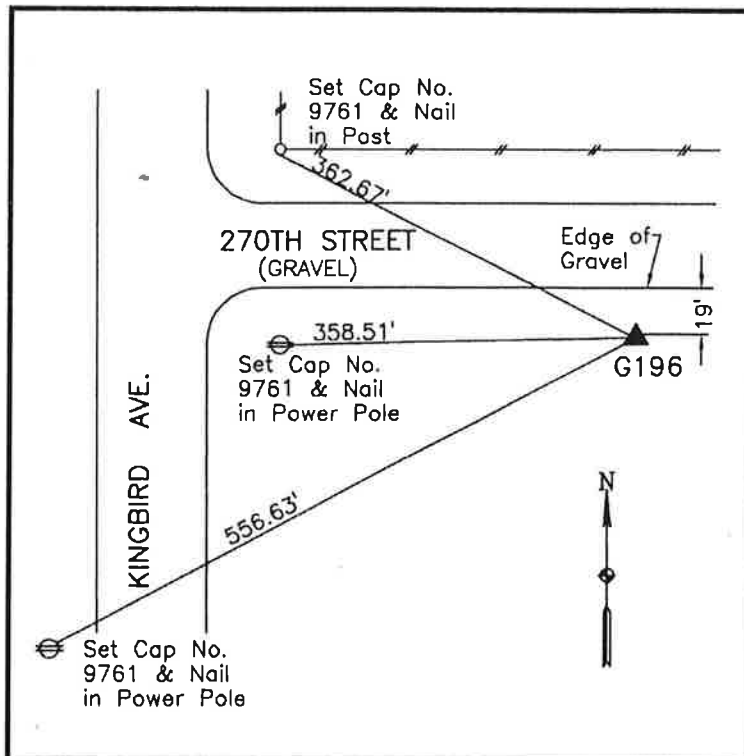
Latitude:                    43° 15' 27.86224" N  
Longitude:                    95° 58' 43.83728" W  
Scale Factor:                0.9999983811  
Convergence:                -1° 40' 48.1"  
Combined Factor:            0.99993670

**Description:**

Placed 3/4" X 6' - 0" Long  
Aluminum Rod with Cap  
Stamped G196 and NGS Style  
Access Cover 2" Deep

**Location:**

South side 270th Street 0.1  
mile east of Kingbird Avenue  
north county line in Section 6,  
T97N, R43W.



**WHKS & CO.**