

**SIOUX COUNTY, IOWA
GPS CONTROL MONUMENT
IOWA NORTH ZONE (1401)
HORIZONTAL DATUM - NAD 83 (1996)
VERTICAL DATUM - NAVD 1988**

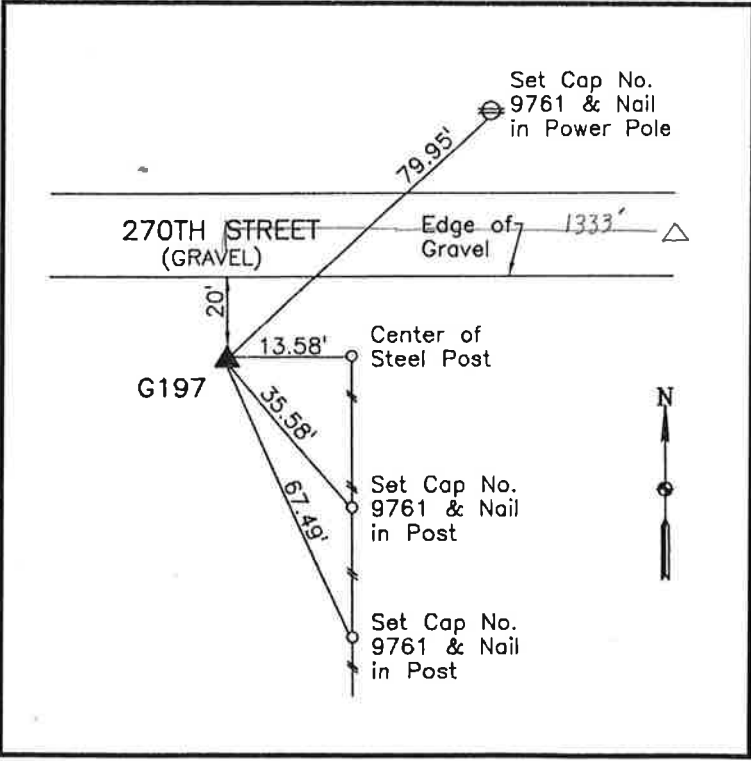
GPS POINT NUMBER **G197**

	US SURVEY FEET	METRIC
Northing:	3931939.241	1198457.478
Easting:	4243524.635	1293428.896
Elevation:	1400.779	426.958
Ellipsoid Height:	1313.424	400.332
Geoid 99 Height:	-87.355	-26.626

Latitude:	43° 15' 31.04878" N
Longitude:	96° 02' 39.93074" W
Scale Factor:	0.9999985405
Convergence:	-1° 43' 28.1"
Combined Factor:	0.99993588

Description:
Placed 3/4" X 6' - 0" Long Aluminum Rod with Cap Stamped G197 and NGS Style Access Cover 1" Deep

Location:
South side 270th Street 0.3 mile west of Jay Avenue north county line in Section 4, T97N, R44W.



WHKS & CO.