

**SIoux COUNTY, IOWA
GPS CONTROL MONUMENT
IOWA NORTH ZONE (1401)
HORIZONTAL DATUM - NAD 83 (1996)
VERTICAL DATUM - NAVD 1988**

GPS POINT NUMBER **G198**

	US SURVEY FEET	METRIC
Northing:	3931896.447	1198444.434
Easting:	4228827.908	1288949.324
Elevation:	1453.051	442.891
Ellipsoid Height:	1365.831	416.306
Geoid 99 Height:	-87.220	-26.585

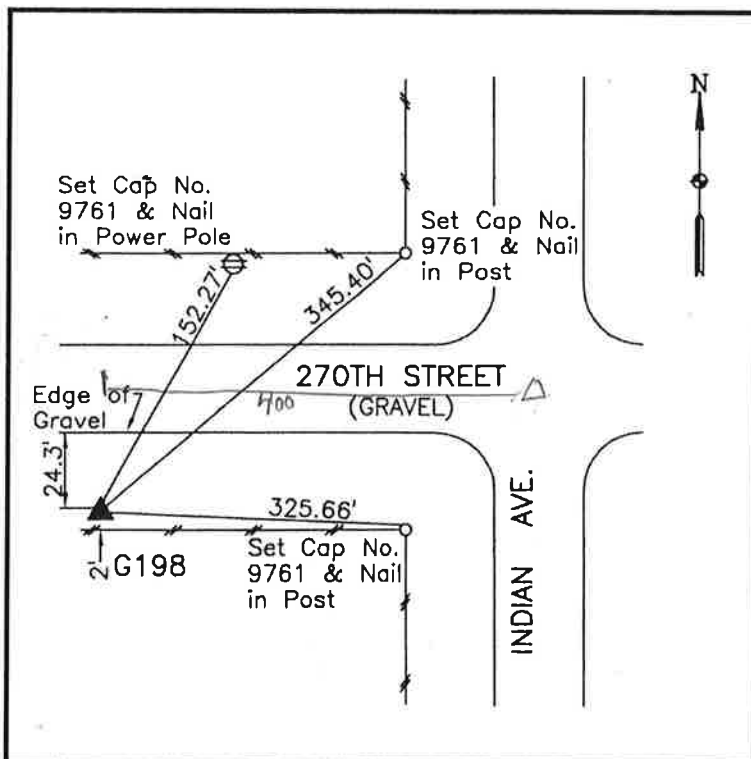
Latitude:	43° 15' 26.21081" N
Longitude:	96° 05' 58.42560" W
Scale Factor:	0.9999982986
Convergence:	-1° 45' 42.6"
Combined Factor:	0.99993313

Description:

Placed 3/4" X 6' - 0" Long Aluminum Rod with Cap Stamped G198 and NGS Style Access Cover 1" Deep

Location:

South side 270th Street 0.1 west of Indian Avenue north county line in Section 1, T97N, R45W.



WHKS & CO.