

SIOUX COUNTY, IOWA
GPS CONTROL MONUMENT
IOWA NORTH ZONE (1401)
HORIZONTAL DATUM - NAD 83 (1996)
VERTICAL DATUM - NAVD 1988

GPS POINT NUMBER **G199**

	US SURVEY FEET	METRIC
Northing:	3932308.767	1198570.109
Easting:	4213220.638	1284192.219
Elevation:	1327.268	404.552
Ellipsoid Height:	1240.155	378.000
Geoid 99 Height:	-87.113	-26.552

Latitude: 43° 15' 25.48850" N

Longitude: 96° 09' 29.40324" W

Scale Factor: 0.9999982625

Convergence: -1° 48' 05.6"

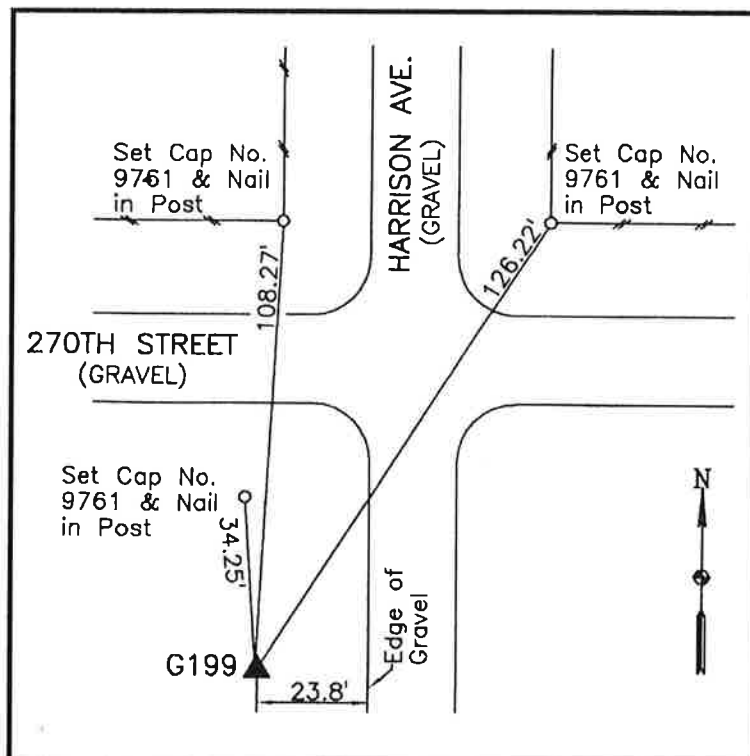
Combined Factor: 0.99993909

Description:

Placed 3/4" X 6' - 0" Long
 Aluminum Rod with Cap
 Stamped G199 and NGS Style
 Access Cover 2" Deep

Location:

Southwest side of intersection
 of Harrison Avenue and 270th
 Street in Section 4, T97N,
 R45W.



WHKS & CO.