

**SIOUX COUNTY, IOWA**  
**GPS CONTROL MONUMENT**  
**IOWA NORTH ZONE (1401)**  
**HORIZONTAL DATUM - NAD 83 (1996)**  
**VERTICAL DATUM - NAVD 1988**

GPS POINT NUMBER      **G200**

	US SURVEY FEET	METRIC
Northing:	3932865.665	1198739.852
Easting:	4197649.450	1279446.111
Elevation:	1348.444	411.007
Ellipsoid Height:	1261.415	384.480
Geoid 99 Height:	-87.029	-26.527

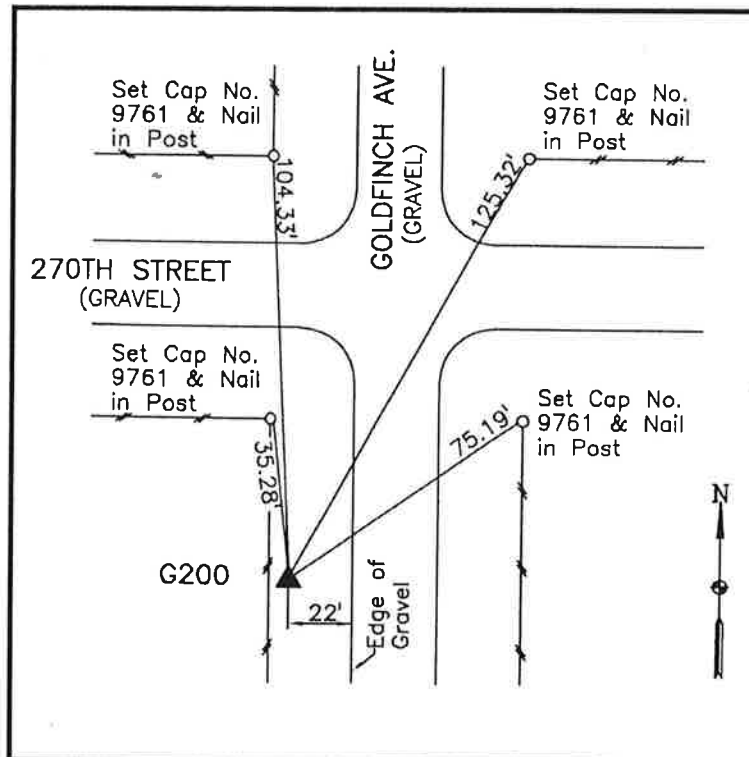
Latitude:                    43° 15' 26.09796" N  
Longitude:                   96° 12' 59.95484" W  
Scale Factor:                0.9999982929  
Convergence:               -1° 50' 28.3"  
Combined Factor:           0.99993811

**Description:**

Placed 3/4" X 6' - 0" Long  
Aluminum Rod with Cap  
Stamped G200 and NGS Style  
Access Cover 1" Deep

**Location:**

Southwest side of intersection  
of Goldfinch Avenue and 270th  
Street in Section 1, T97N,  
R46W.



**WHKS & CO.**

G200