

**SIOUX COUNTY, IOWA
GPS CONTROL MONUMENT
IOWA NORTH ZONE (1401)
HORIZONTAL DATUM - NAD 83 (1996)
VERTICAL DATUM - NAVD 1988**

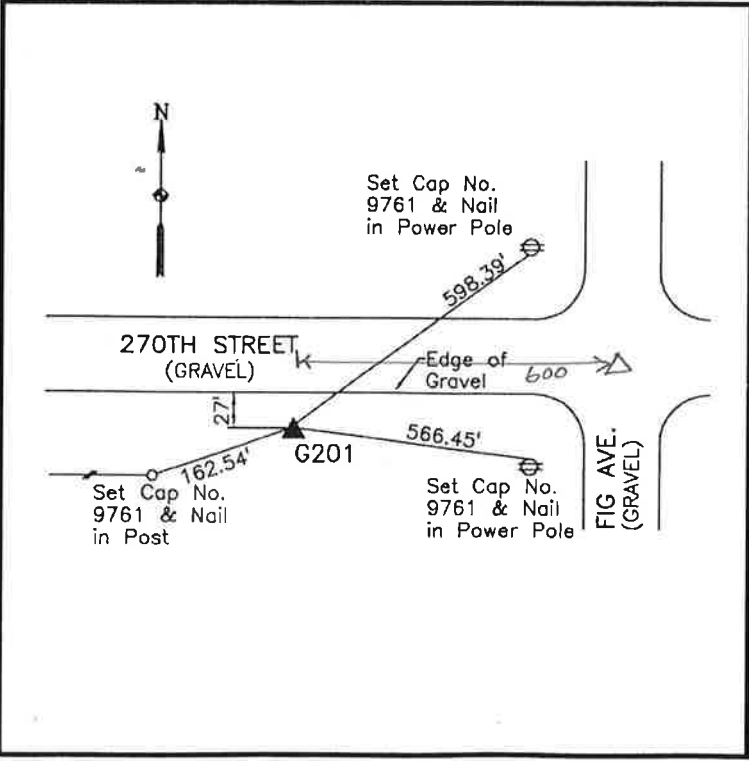
GPS POINT NUMBER **G201**

	US SURVEY FEET	METRIC
Northing:	3933421.878	1198909.386
Easting:	4181313.030	1274466.761
Elevation:	1374.154	418.843
Ellipsoid Height:	1287.235	392.350
Geoid 99 Height:	-86.919	-26.493

Latitude:	43° 15' 26.34600" N
Longitude:	96° 16' 40.84248" W
Scale Factor:	0.9999983053
Convergence:	-1° 52' 58.0"
Combined Factor:	0.99993689

Description:
Placed 3/4" X 6' - 0" Long
Aluminum Rod with Cap
Stamped G201 and NGS Style
Access Cover 3" Deep

Location:
South side 270th street 0.1
mile west of Fig Avenue in
Section 4, T97N, R46W.



WHKS & CO.