

**SIOUX COUNTY, IOWA
GPS CONTROL MONUMENT
IOWA NORTH ZONE (1401)
HORIZONTAL DATUM - NAD 83 (1996)
VERTICAL DATUM - NAVD 1988**

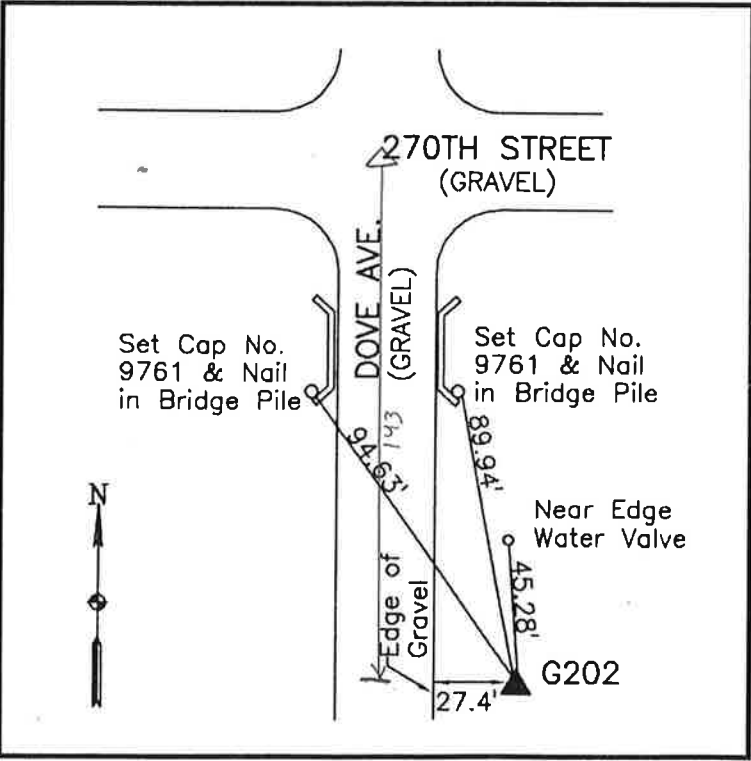
GPS POINT NUMBER **G202**

	US SURVEY FEET	METRIC
Northing:	3933900.886	1199055.388
Easting:	4166403.137	1269922.216
Elevation:	1329.342	405.184
Ellipsoid Height:	1242.532	378.724
Geoid 99 Height:	-86.810	-26.460

Latitude:	43° 15' 26.18745" N
Longitude:	96° 20' 02.42916" W
Scale Factor:	0.9999982974
Convergence:	-1° 55' 14.6"
Combined Factor:	0.99993902

Description:
Placed 3/4" X 6' - 0" Long
Aluminum Rod with Cap
Stamped G202 and NGS Style
Access Cover 1" Deep

Location:
East side Dove Avenue just
south of 270th Street in Section
6, T97N, R46W.



WHKS & CO.