

**SIOUX COUNTY, IOWA  
GPS CONTROL MONUMENT  
IOWA NORTH ZONE (1401)  
HORIZONTAL DATUM - NAD 83 (1996)  
VERTICAL DATUM - NAVD 1988**

GPS POINT NUMBER      **G203**

	US SURVEY FEET	METRIC
Northing:	3934305.927	1199178.845
Easting:	4150665.955	1265125.513
Elevation:	1322.339	403.050
Ellipsoid Height:	1235.661	376.630
Geoid 99 Height:	-86.679	-26.420

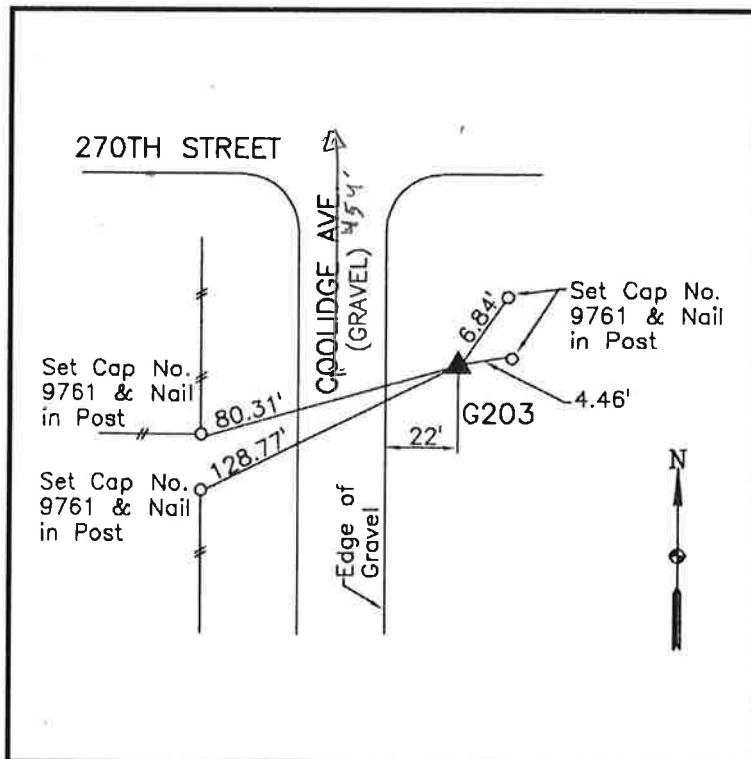
Latitude:	43° 15' 24.92176" N
Longitude:	96° 23' 35.15416" W
Scale Factor:	0.9999982342
Convergence:	-1° 57' 38.8"
Combined Factor:	0.99993928

**Description:**

Placed 3/4" X 6' - 0" Long Aluminum Rod with Cap Stamped G203 and NGS Style Access Cover 2" Deep

**Location:**

East side Coolidge Avenue 0.1 mile south of 270th Street in Section 3, T97N, R47W.



**WHKS & CO.**