

**SIOUX COUNTY, IOWA  
GPS CONTROL MONUMENT  
IOWA NORTH ZONE (1401)  
HORIZONTAL DATUM - NAD 83 (1996)  
VERTICAL DATUM - NAVD 1988**

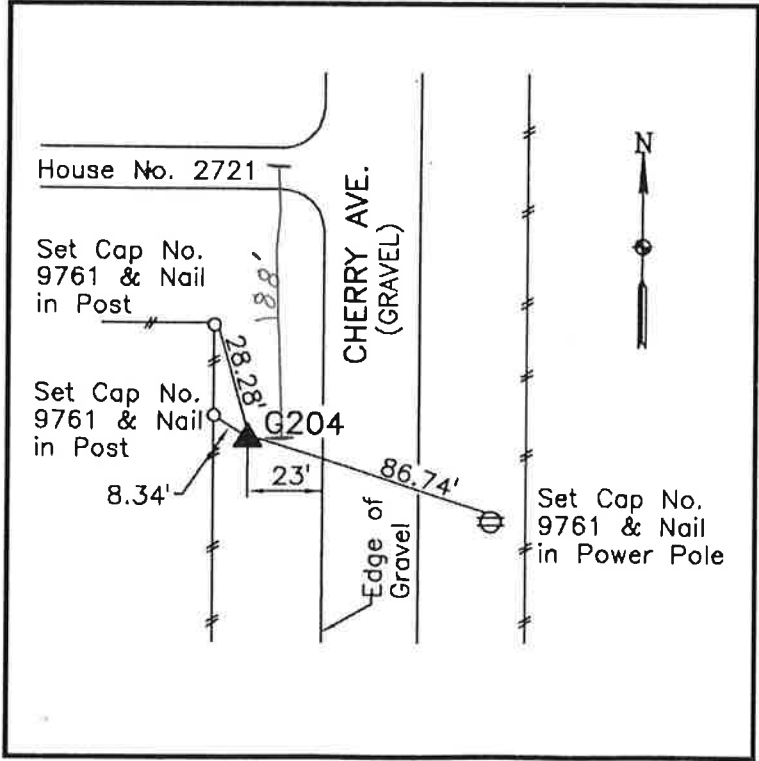
GPS POINT NUMBER      **G204**

	US SURVEY FEET	METRIC
Northing:	3934457.699	1199225.105
Easting:	4135322.575	1260448.842
Elevation:	1429.392	435.680
Ellipsoid Height:	1342.865	409.306
Geoid 99 Height:	-86.528	-26.374

Latitude:	43° 15' 21.18320" N
Longitude:	96° 27' 02.43892" W
Scale Factor:	0.9999980477
Convergence:	-1° 59' 59.3"
Combined Factor:	0.99993398

**Description:**  
Placed 3/4" X 6' - 0" Long Aluminum Rod with Cap Stamped G204 and NGS Style Access Cover 1" Deep

**Location:**  
West side Cherry Avenue 0.2 mile south of 270th Street just south of farmstead at address 2721 Cherry Avenue in Section 2, T97N, R48W.



**WHKS & CO.**