

**SIoux COUNTY, IOWA
GPS CONTROL MONUMENT
IOWA NORTH ZONE (1401)
HORIZONTAL DATUM - NAD 83 (1996)
VERTICAL DATUM - NAVD 1988**

GPS POINT NUMBER **G205**

	US SURVEY FEET	METRIC
Northing:	3936244.855	1199769.831
Easting:	4120510.642	1255934.155
Elevation:	1474.766	449.510
Ellipsoid Height:	1388.326	423.163
Geoid 99 Height:	-86.440	-26.347

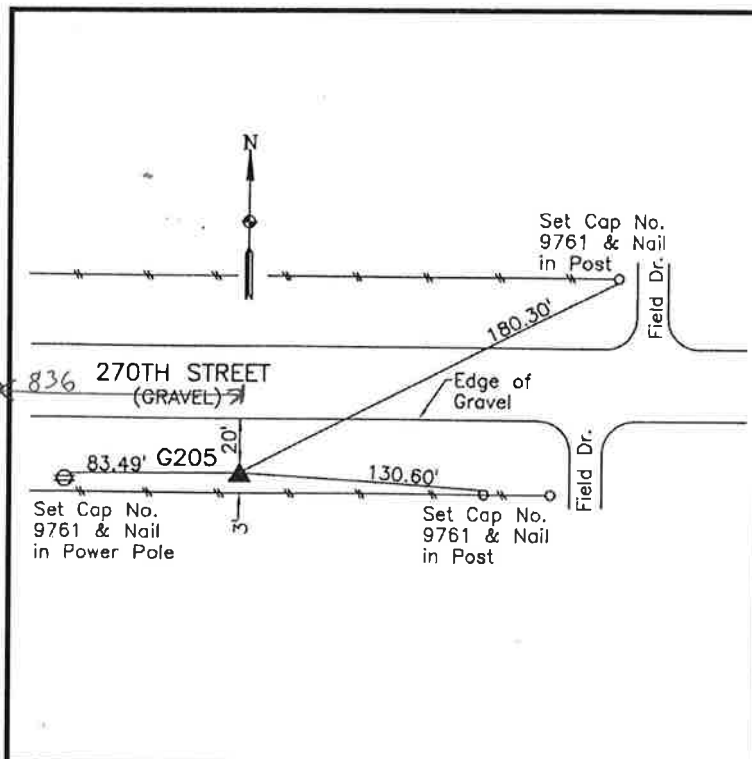
Latitude:	43° 15' 33.67019" N
Longitude:	96° 30' 23.32556" W
Scale Factor:	0.9999986719
Convergence:	-2° 02' 15.5"
Combined Factor:	0.99993243

Description:

Placed 3/4" X 6' - 0" Long Aluminum Rod with Cap Stamped G205 and NGS Style Access Cover 1" Deep

Location:

South side of 270th Street 0.2 mile east of Beech Avenue in Section 3, T97N, R48W.



WHKS & CO.