

SIoux COUNTY, IOWA
GPS CONTROL MONUMENT
IOWA NORTH ZONE (1401)
HORIZONTAL DATUM - NAD 83 (1996)
VERTICAL DATUM - NAVD 1988

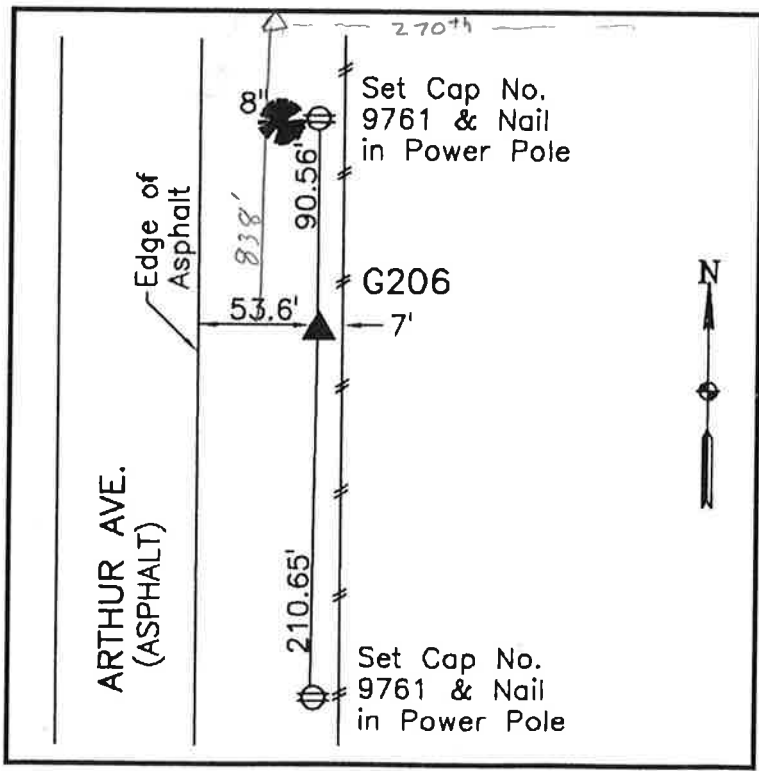
GPS POINT NUMBER **G206**

	US SURVEY FEET	METRIC
Northing:	3935964.633	1199684.419
Easting:	4109211.339	1252490.121
Elevation:	1246.285	379.869
Ellipsoid Height:	1159.891	353.536
Geoid 99 Height:	-86.394	-26.333

Latitude:	43° 15' 26.90832" N
Longitude:	96° 32' 55.78643" W
Scale Factor:	0.9999983334
Convergence:	-2° 03' 58.8"
Combined Factor:	0.99994299

Description:
 Placed 3/4" X 6' - 0" Long
 Aluminum Rod with Cap
 Stamped G206 and NGS Style
 Access Cover 1" Deep

Location:
 East side A54B Boulevard 0.2
 mile south of 270th Street in
 Section 5, T97N, R48W.



WHKS & CO.