

2000
Tama Indian Settlement, Tama, Iowa
Iowa North Zone (1401)
NAD_83(1996)

Point Number: 2

Northing: 3471697.72(Ft) Easting: 5134204.38(Ft)

Northing: 1058175.582(M) Easting: 1564908.625(M)

Elev: 844.75(Ft) NAVD_88

Elev: 257.480(M) NAVD_88 Ellip Ht: 225.860(M) 96C Geoid Ht: -31.620(M)

Latitude: 42-01-15.720979 N Longitude: 92-42-58.669477 W

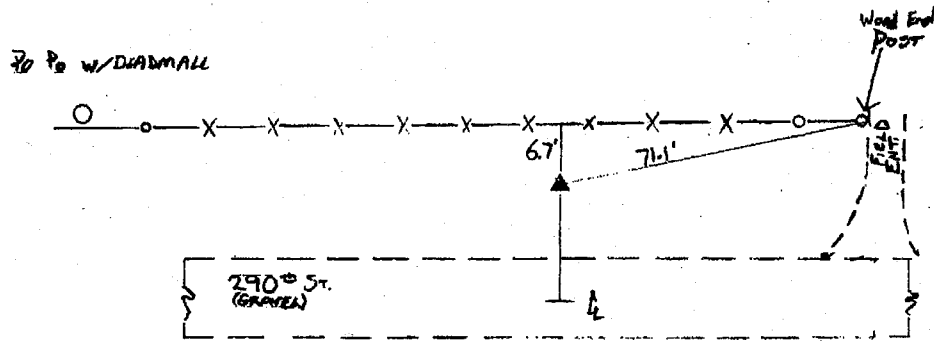
Theta: 0-31-52.14 Combination Factor: 0.99997315

Designation: **GPS CONTROL PT 2000-002**

Monument Type: 5/8" dia driven aluminum rod with a 2-1/2" dia aluminum cap and permanent magnet encased in a 5" dia PVC pipe with an aluminum access cover.

To Reach: 23ft N of 290th St, 400ft E of S1/4 cor of Sec 4 T83N R16W.

Date Printed July 19, 2000



002
DBC / SJR
3-29-00