

2000
Tama Indian Settlement, Tama, Iowa
Iowa North Zone (1401)
NAD_83(1996)

Point Number: 29

Northing: 3457626.07(Ft) Easting: 5152913.03(Ft)

Northing: 1053886.533(M) Easting: 1570611.032(M)

Elev: 891.12(Ft) NAVD_88

Elev: 271.614(M) NAVD_88 Ellip Ht: 239.972(M) 96C Geoid Ht: -31.641(M)

Latitude: 41-58-54.928728 N Longitude: 92-38-52.702553 W

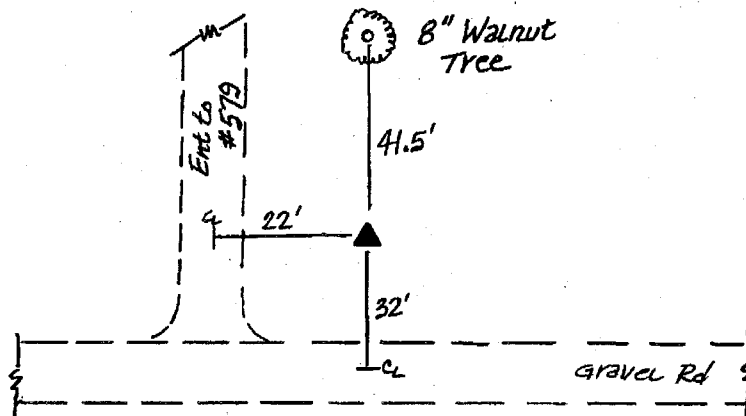
Theta: 0-34-38.84 Combination Factor: 0.99997880

Designation: GPS CONTROL PT 2000-029

Monument Type: 5/8" dia driven aluminum rod with a 2-1/2" dia aluminum cap and permanent magnet encased in a 5" dia PVC pipe with an aluminum access cover.

To Reach: 32ft N of Meskwaki Rd, 22ft E of ent to #579, 1/4mi S of W1/4 Cor of Sec 19 T83N R15W.

Date Printed July 19, 2000



029
DBC/JJR
3-29-00

Evergreen Trees at 35°