

2000
Tama Indian Settlement, Tama, Iowa
Iowa North Zone (1401)
NAD_83(1996)

Point Number: 3

Northing: 3450166.90(Ft) Easting: 5136598.62(Ft)

Northing: 1051612.974(M) Easting: 1565638.392(M)

Elev: 975.32(Ft) NAVD_88

Elev: 297.277(M) NAVD_88 Ellip Ht: 265.612(M) 96C Geoid Ht: -31.665(M)

Latitude: 41-57-42.811685 N Longitude: 92-42-29.622679 W

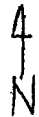
Theta: 0-32-11.83 Combination Factor: 0.99997899

Designation: GPS CONTROL PT 2000-003

Monument Type: 5/8" dia driven aluminum rod with a 2-1/2" dia aluminum cap and permanent magnet encased in a 5" dia PVC pipe with an aluminum access cover.

To Reach: 24ft E of Hwy T47, 0.3mi N of W 1/4 cor of Sec 34 T83N R16W across from ent to #3316

Date Printed July 19, 2000



003
DBC/JR
3-30-00

