

2000  
Tama Indian Settlement, Tama, Iowa  
Iowa North Zone (1401)  
NAD\_83(1996)

Point Number: 46

Northing: 3442942.89(Ft)      Easting: 5160518.00(Ft)

Northing: 1049411.092(M)      Easting: 1572929.032(M)

Elev: 839.66(Ft) NAVD\_88

Elev: 255.930(M) NAVD\_88      Ellip Ht: 224.260(M)      96C Geoid Ht: -31.670(M)

Latitude: 41-56-29.115373 N      Longitude: 92-37-14.039612 W

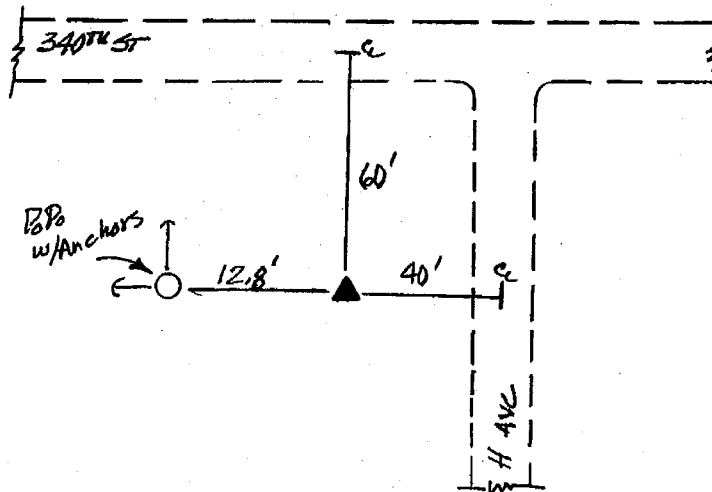
Theta: 0-35-45.71      Combination Factor: 0.99998990

Designation: **GPS CONTROL PT 2000-046**

**Monument Type:** 5/8" dia driven aluminum rod with a 2-1/2" dia aluminum cap and permanent magnet encased in a 5" dia PVC pipe with an aluminum access cover.

**To Reach:** 40ft W of "H" Ave, 60ft S of 340th St, near the Ctr of Sec 5 T82N R15W.

Date Printed July 19, 2000



4 046  
↑ DBC/JSR  
N 3-31-00