

2000
Tama Indian Settlement, Tama, Iowa
Iowa North Zone (1401)
NAD_83(1996)

Point Number: 8

Northing: 3471740.80(Ft) Easting: 5138937.34(Ft)

Northing: 1058188.712(M) Easting: 1566351.234(M)

Elev: 992.37(Ft) NAVD_88

Elev: 302.475(M) NAVD_88 Ellip Ht: 270.858(M) 96C Geoid Ht: -31.617(M)

Latitude: 42-01-15.708246 N Longitude: 92-41-55.963099 W

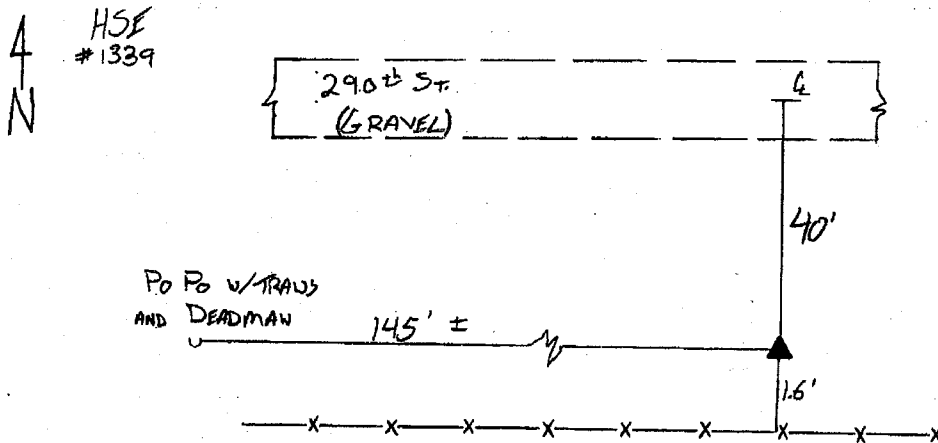
Theta: 0-32-34.64 Combination Factor: 0.99996609

Designation: GPS CONTROL PT 2000-008

Monument Type: 5/8" dia driven aluminum rod with a 2-1/2" dia aluminum cap and permanent magnet encased in a 5" dia PVC pipe with an aluminum access cover.

To Reach: 40ft S of 290th St, 100ft W of N1/4 Cor of Sec 10 T83N R16W, E of #1339

Date Printed July 19, 2000



008
DBL/JSR
3-29-00