

Tama County, Iowa
 Iowa North Zone (1401)
 Horiz. Datum: NAD83(NSRS2007)
 Vert. Datum: NAVD 1988
 US Survey Feet
2007

Point Name: **10**

Designation: 2007-010 Tama Co GPS Control Pt

Northing: **3559191.45**sft Easting: **5135324.58**sft

Orthometric Height: **1045.26**sft Ellipsoid Height: **940.85**sft **Geoid03**

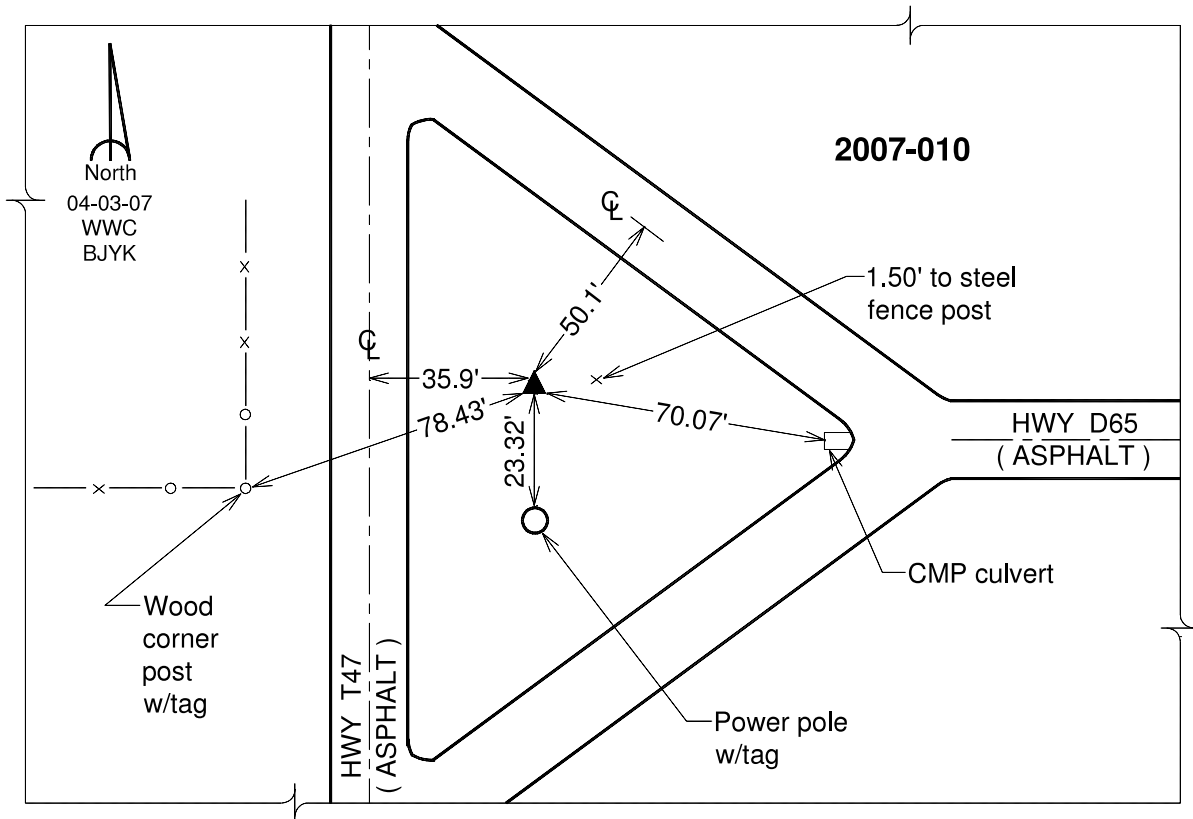
Latitude: **42°15'39.91153"N**

Longitude: **92°42'32.98611"W**

Mapping Angle: **0°32'10"**

Combination Scale Factor: **0.99992551**

Monument Type: Berntsen 3/4" Top Security Rod Monument with a 2-1/2" dia. domed survey cap and permanent magnet encased in a white PVC pipe with a NGS style alum. access cover.



This document was prepared by DCI and GBC for use by Tama County, Iowa.