

Tama County, Iowa
Iowa North Zone (1401)
Horiz. Datum: NAD83(NSRS2007)
Vert. Datum: NAVD 1988
US Survey Feet
2007

Point Name: **1004**

Designation: 98-161 MARSHALL CO (set by ASI in 1998)

Northing: **3428839.46**sft Easting: **5121106.10**sft

Orthometric Height: **1012.91**sft Ellipsoid Height: **908.69**sft **Geoid03**

Latitude: **41°54'13.51298"N**

Longitude: **92°45'57.12403"W**

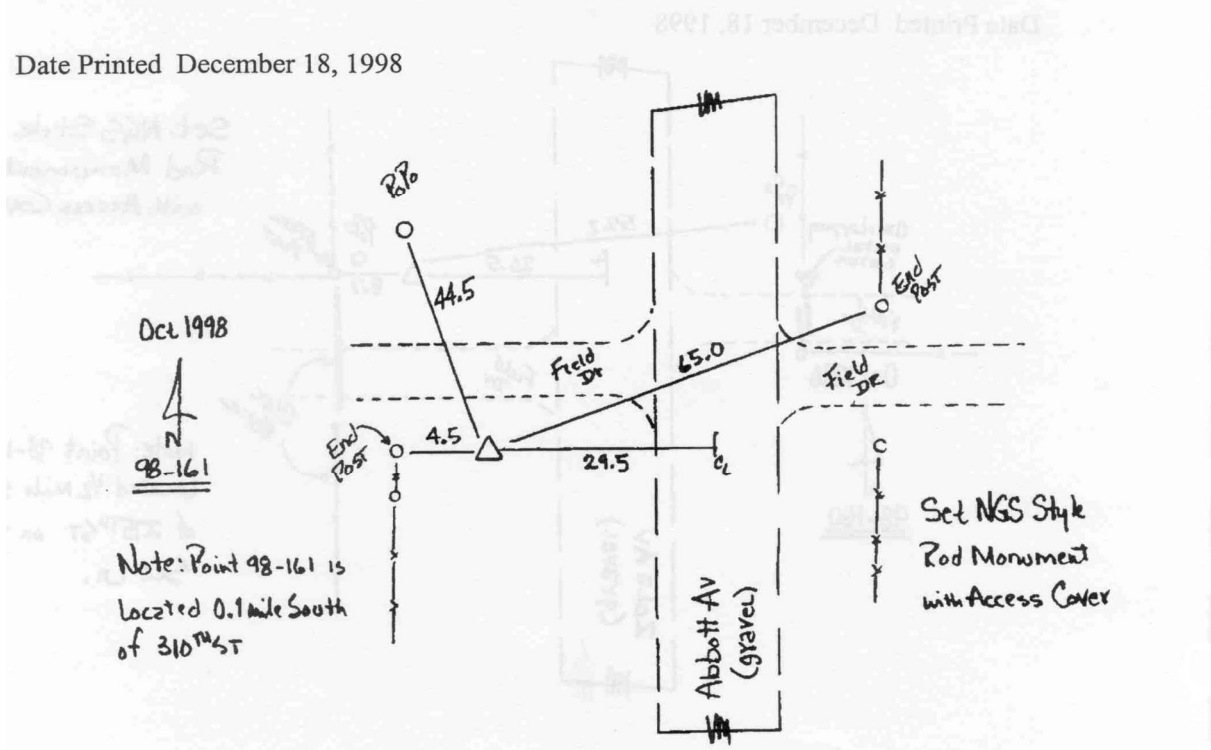
Mapping Angle: **0°29'51"**

Combination Scale Factor: **0.99999020**

Monument Type: 5/8" dia. driven aluminum rod with a 2-1/2" dia aluminum cap and permanent magnet encased in a 5" dia. PVC pipe with an aluminum access cover.

To Reach: 30ft W of Abbott Ave on S side of field entr 0.1mi S of 310th St near the NE Cor of Sec 24 T82N R17W

Date Printed December 18, 1998



This document was prepared by DCI and GBC for use by Tama County, Iowa.