

Tama County, Iowa
Iowa North Zone (1401)
Horiz. Datum: NAD83(NSRS2007)
Vert. Datum: NAVD 1988
US Survey Feet
2007

Point Name: **1005**

Designation: 98-160 MARSHALL CO (set by ASI in 1998)

Northing: **3445413.95**sft Easting: **5119727.55**sft

Orthometric Height: **1010.78**sft Ellipsoid Height: **906.69**sft **Geoid03**

Latitude: **41°56'57.35998"N**

Longitude: **92°46'13.46134"W**

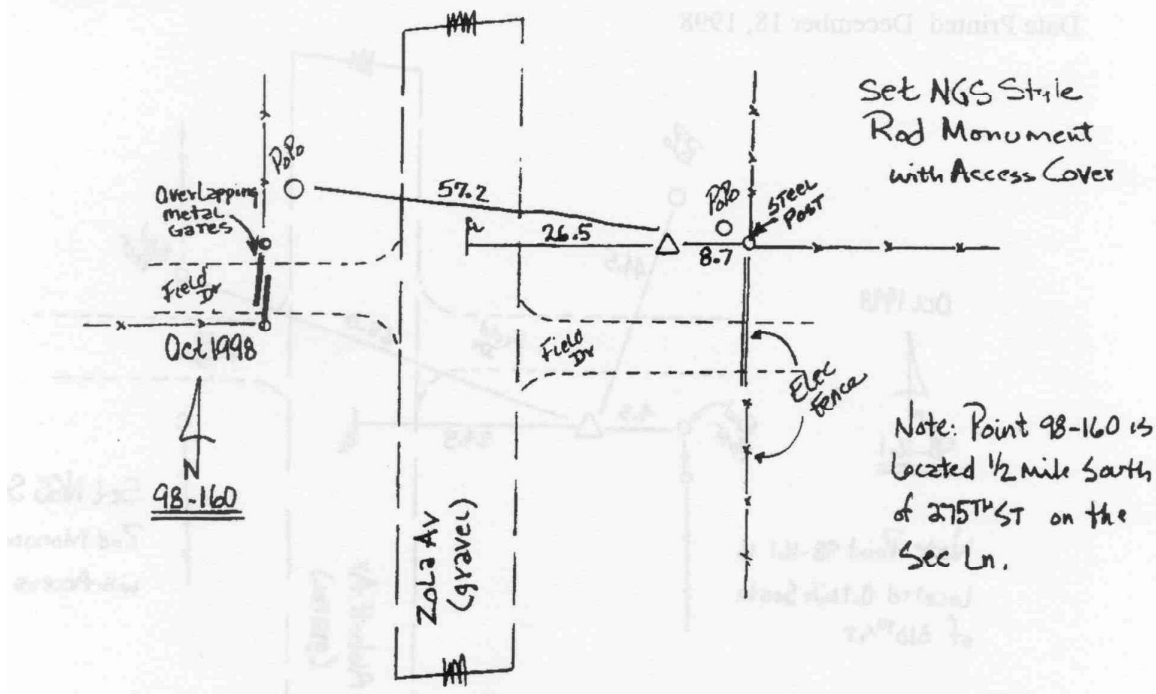
Mapping Angle: **0°29'40"**

Combination Scale Factor: **0.99998012**

Monument Type: 5/8" dia. driven aluminum rod with a 2-1/2" dia aluminum cap and permanent magnet encased in a 5" dia. PVC pipe with an aluminum access cover.

To Reach: 25ft E of Zola Ave on the Sec Line near the SE Cor of Sec 36 T83N R17W

Date Printed December 18, 1998



This document was prepared by DCI and GBC for use by Tama County, Iowa.