

Tama County, Iowa
Iowa North Zone (1401)
Horiz. Datum: NAD83(NSRS2007)
Vert. Datum: NAVD 1988
US Survey Feet
2007

Point Name: **1006**

Designation: 98-159 MARSHALL CO (set by ASI in 1998)

Northing: **3461135.96**sft Easting: **5120883.62**sft

Orthometric Height: **965.73**sft Ellipsoid Height: **861.71**sft **Geoid03**

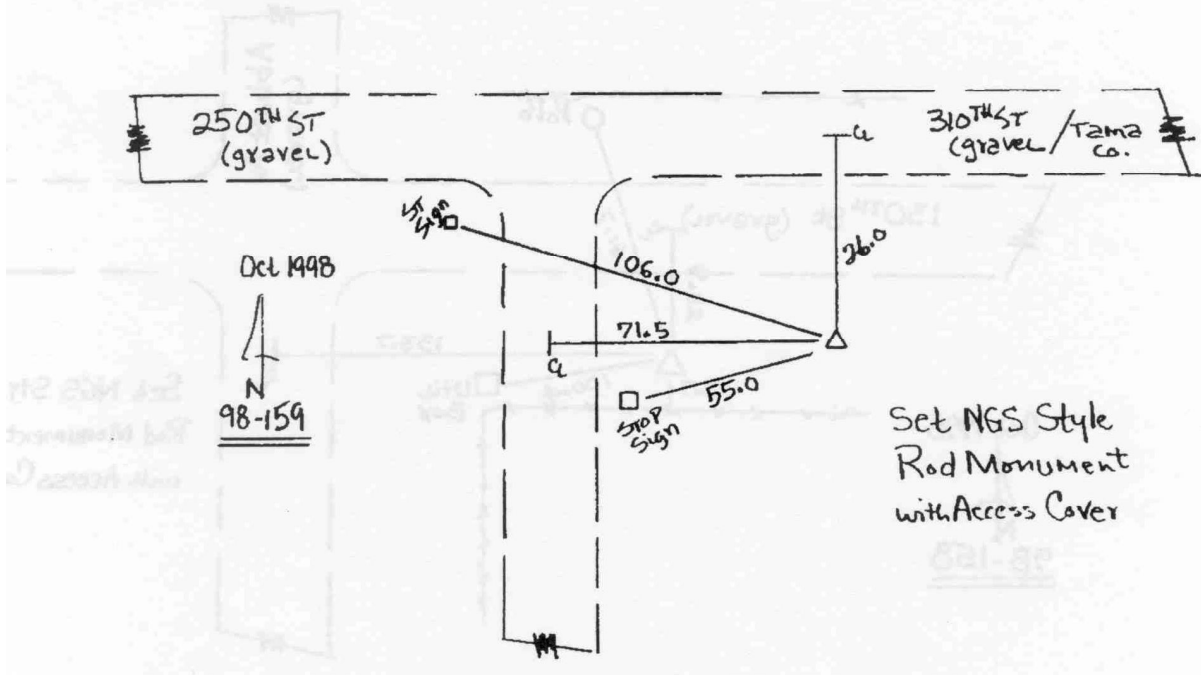
Latitude: **41°59'32.56937"N** Longitude: **92°45'56.35614"W**

Mapping Angle: **0°29'52"** Combination Scale Factor: **0.99997320**

Monument Type: 5/8" dia. driven aluminum rod with a 2-1/2" dia aluminum cap and permanent magnet encased in a 5" dia. PVC pipe with an aluminum access cover.

To Reach: 30ft S of 250th St 75ft E of Abbott Ave near the NW Cor of Sec 19 T83N R16W

Date Printed December 18, 1998



This document was prepared by DCI and GBC for use by Tama County, Iowa.