

Tama County, Iowa
Iowa North Zone (1401)
Horiz. Datum: NAD83(NSRS2007)
Vert. Datum: NAVD 1988
US Survey Feet
2007

Point Name: **1007**

Designation: 98-158 MARSHALL CO (set by ASI in 1998)

Northing: **3476906.08**sft Easting: **5120597.77**sft

Orthometric Height: **846.01**sft Ellipsoid Height: **741.97**sft **Geoid03**

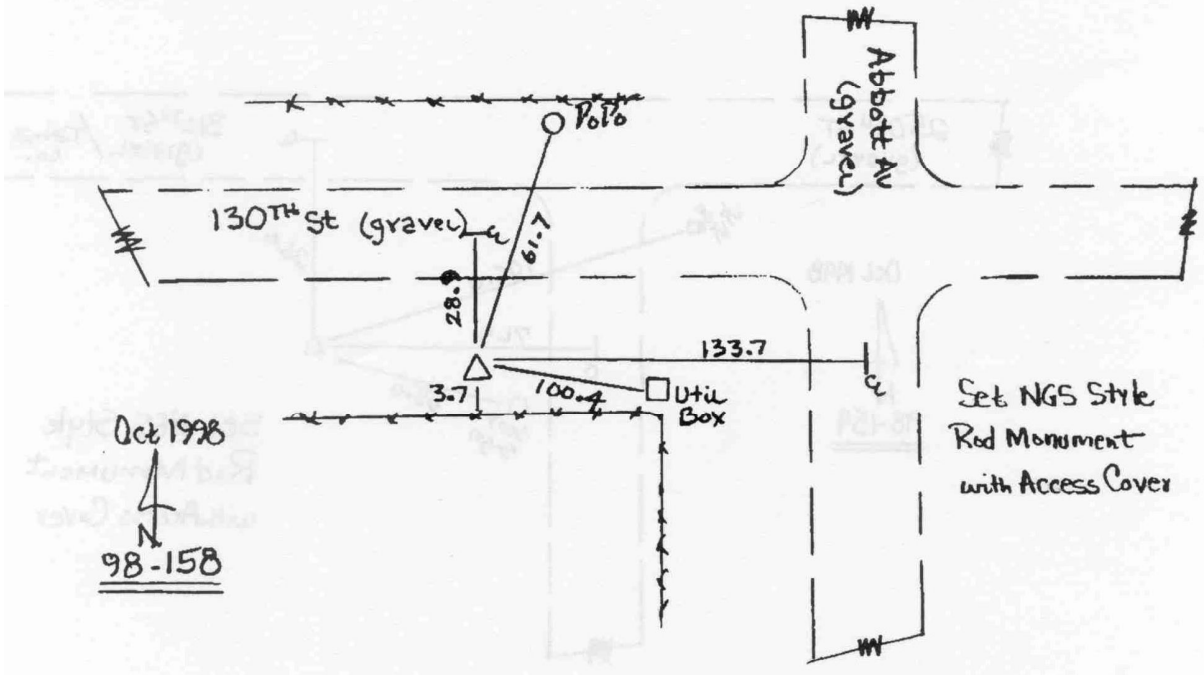
Latitude: **42°02'08.37752"N** Longitude: **92°45'58.32865"W**

Mapping Angle: **0°29'50"** Combination Scale Factor: **0.99997037**

Monument Type: 5/8" dia. driven aluminum rod with a 2-1/2" dia aluminum cap and permanent magnet encased in a 5" dia. PVC pipe with an aluminum access cover.

To Reach: 130ft E of Abbott Ave 170ft N of Sec Line near the SW Cor of Sec 31 T84N R16W

Date Printed December 18, 1998



This document was prepared by DCI and GBC for use by Tama County, Iowa.