

Tama County, Iowa
 Iowa North Zone (1401)
 Horiz. Datum: NAD83(NSRS2007)
 Vert. Datum: NAVD 1988
 US Survey Feet
2007

Point Name: **1008**

Designation: 98-157 MARSHALL CO (set by ASI in 1998)

Northing: **3492444.95**sft Easting: **5120392.87**sft

Orthometric Height: **1007.55**sft Ellipsoid Height: **903.53**sft **Geoid03**

Latitude: **42°04'41.89450"N**

Longitude: **92°45'59.25713"W**

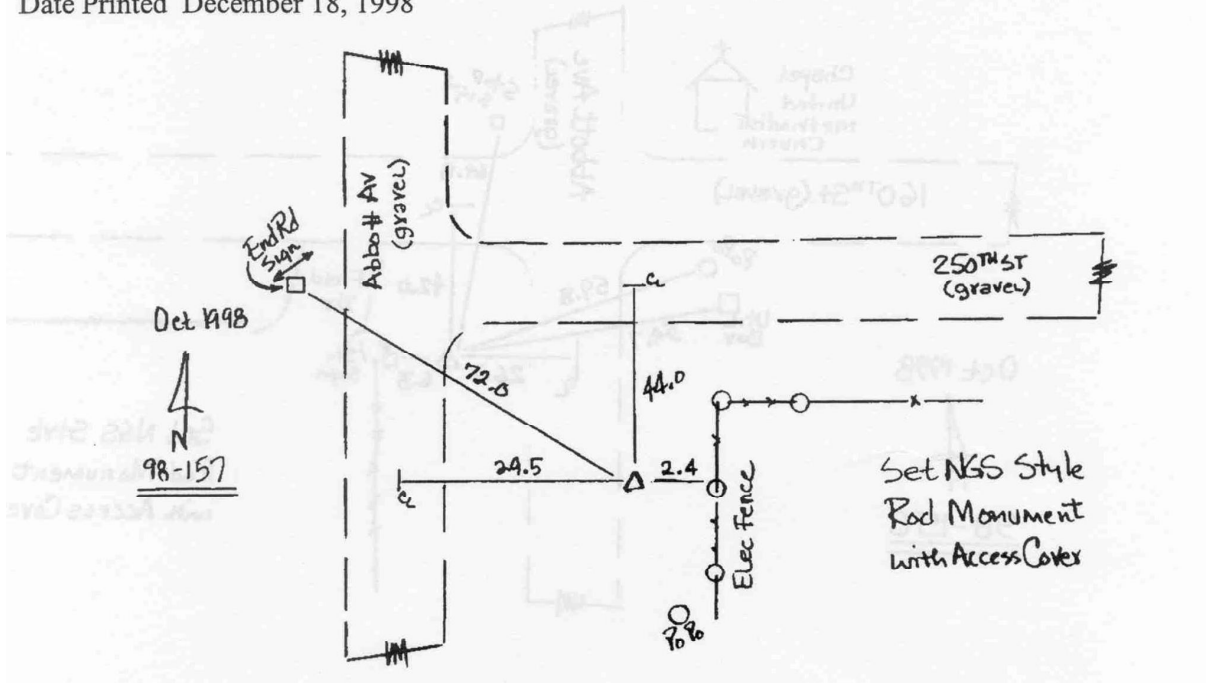
Mapping Angle: **0°29'50"**

Combination Scale Factor: **0.99995480**

Monument Type: 5/8" dia. driven aluminum rod with a 2-1/2" dia aluminum cap and permanent magnet encased in a 5" dia. PVC pipe with an aluminum access cover.

To Reach: 25ft E of Abbott Ave 45ft S of 250th St (Hardin Cnty) near the NW Cor of Sec 19 T84N R16W

Date Printed December 18, 1998



This document was prepared by DCI and GBC for use by Tama County, Iowa.