

Tama County, Iowa
Iowa North Zone (1401)
Horiz. Datum: NAD83(NSRS2007)
Vert. Datum: NAVD 1988
US Survey Feet
2007

Point Name: **1009**

Designation: 98-156 MARSHALL CO (set by ASI in 1998)

Northing: **3508856.64**sft Easting: **5120184.13**sft

Orthometric Height: **1007.59**sft Ellipsoid Height: **903.52**sft **Geoid03**

Latitude: **42°07'24.03389"N**

Longitude: **92°46'00.13736"W**

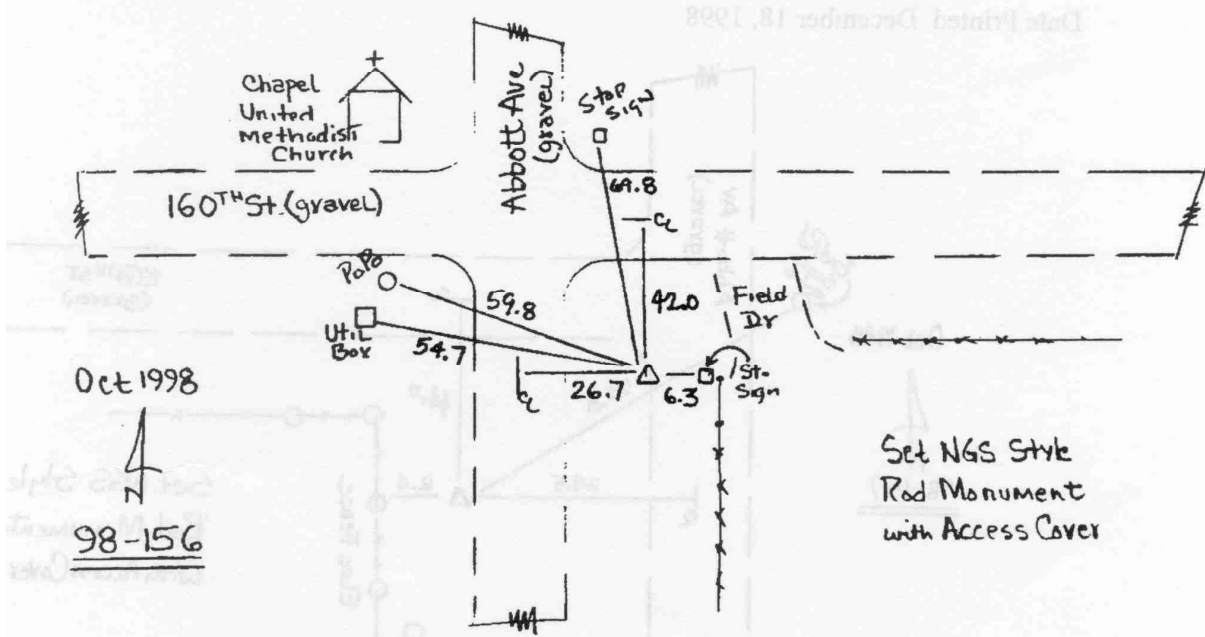
Mapping Angle: **0°29'49"**

Combination Scale Factor: **0.99994708**

Monument Type: 5/8" dia. driven aluminum rod with a 2-1/2" dia aluminum cap and permanent magnet encased in a 5" dia. PVC pipe with an aluminum access cover.

To Reach: 25ft E of Abbott Ave 35ft S of 160th St near the NW Cor of Sec 6 T85N R16W

Date Printed December 18, 1998



This document was prepared by DCI and GBC for use by Tama County, Iowa.