

Tama County, Iowa
Iowa North Zone (1401)
Horiz. Datum: NAD83(NSRS2007)
Vert. Datum: NAVD 1988
US Survey Feet
2007

Point Name: **1010**

Designation: 98-155 MARSHALL CO (set by ASI in 1998)

Northing: **3524660.88**sft Easting: **5119815.84**sft

Orthometric Height: **1034.37**sft Ellipsoid Height: **930.17**sft **Geoid03**

Latitude: **42°10'00.18628"N**

Longitude: **92°46'03.20729"W**

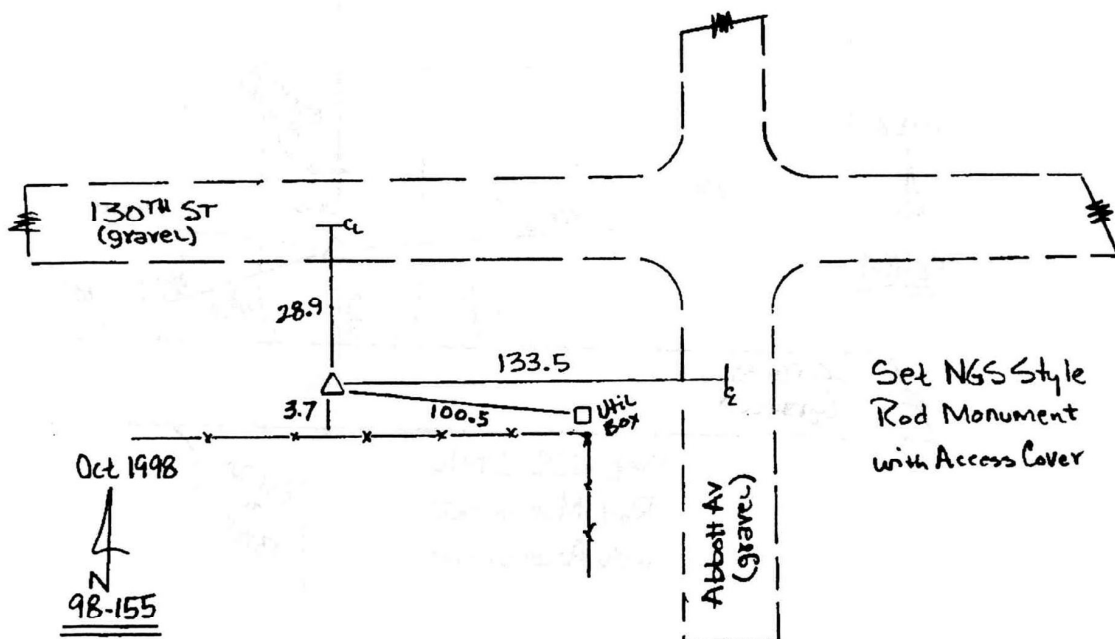
Mapping Angle: **0°29'47"**

Combination Scale Factor: **0.99993896**

Monument Type: 5/8" dia. driven aluminum rod with a 2-1/2" dia aluminum cap and permanent magnet encased in a 5" dia. PVC pipe with an aluminum access cover.

To Reach: 25ft S of 130th St 135ft W of Abbott Ave near the NE Cor of Sec 24 T85N R17W

Date Printed December 18, 1998



This document was prepared by DCI and GBC for use by Tama County, Iowa.