

Tama County, Iowa
Iowa North Zone (1401)
Horiz. Datum: NAD83(NSRS2007)
Vert. Datum: NAVD 1988
US Survey Feet
2007

Point Name: **1011**

Designation: FBN horizontal and 1st order vertical control station "Y 10" PID: NK0107

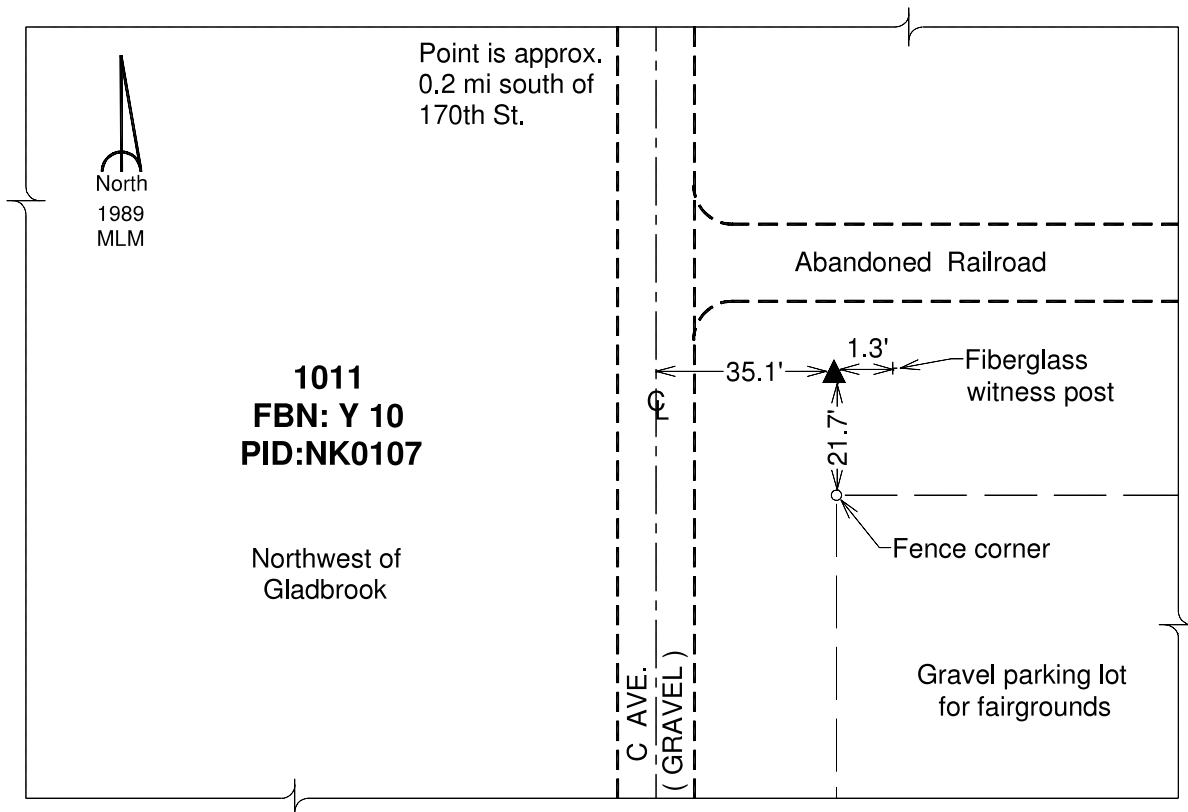
Northing: **3533770.95**sft Easting: **5130420.63**sft

Orthometric Height: **957.08**sft Ellipsoid Height: **852.86**sft **Geoid03**

Latitude: **42°11'29.24697"N** Longitude: **92°43'41.28746"W**

Mapping Angle: **0°31'23"** Combination Scale Factor: **0.99993900**

Monument Type: The station mark is a CGS bench mark disk stamped "Y 10 1933" and set in the top of a concrete monument.



This document was prepared by DCI and GBC for use by Tama County, Iowa.