

**Tama County, Iowa**  
Iowa North Zone (1401)  
Horiz. Datum: NAD83(NSRS2007)  
Vert. Datum: NAVD 1988  
US Survey Feet  
**2007**

Point Name: **1014**

**Designation:** USGS 3rd order vertical control station "TT 7 FJH" (GRUNDY CO 9783)

Northing: **3545309.39**sft Easting: **5122318.38**sft

Orthometric Height: **1046.66**sft Ellipsoid Height: **942.23**sft **Geoid03**

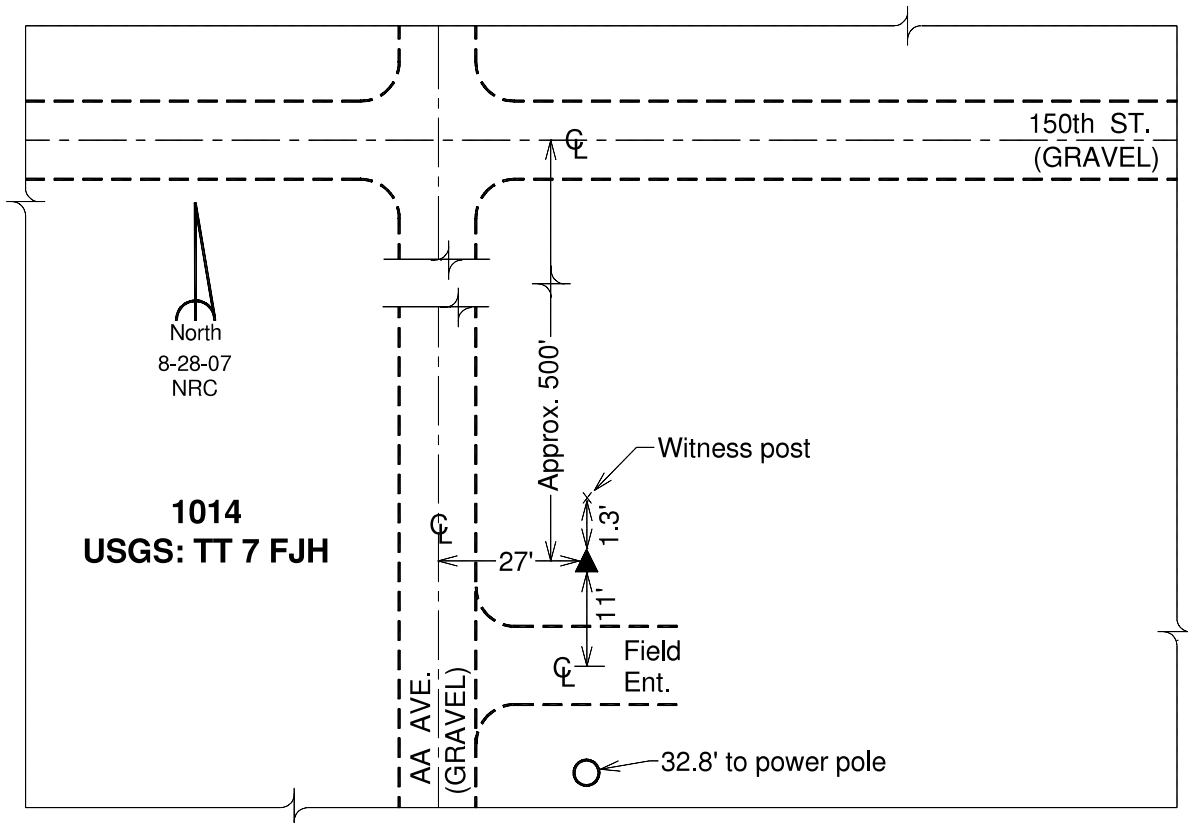
Latitude: **42°13'23.94472"N**

Longitude: **92°45'27.56963"W**

Mapping Angle: **0°30'11"**

Combination Scale Factor: **0.99993030**

**Monument Type:** The station mark is a standard disk stamped "TT 7 FJH" and set in the top of a square concrete post. It projects 1/2ft above the ground.



*This document was prepared by DCI and GBC for use by Tama County, Iowa.*