

**Tama County, Iowa**  
Iowa North Zone (1401)  
Horiz. Datum: NAD83(NSRS2007)  
Vert. Datum: NAVD 1988  
US Survey Feet  
**2007**

Point Name: **1024**

**Designation:** No. 904 US Coast & Geodetic Survey Bench Mark (BHC 94-001)

Northing: **3572837.99**sft Easting: **5182692.79**sft

Orthometric Height: **1015.88**sft Ellipsoid Height: **912.23**sft **Geoid03**

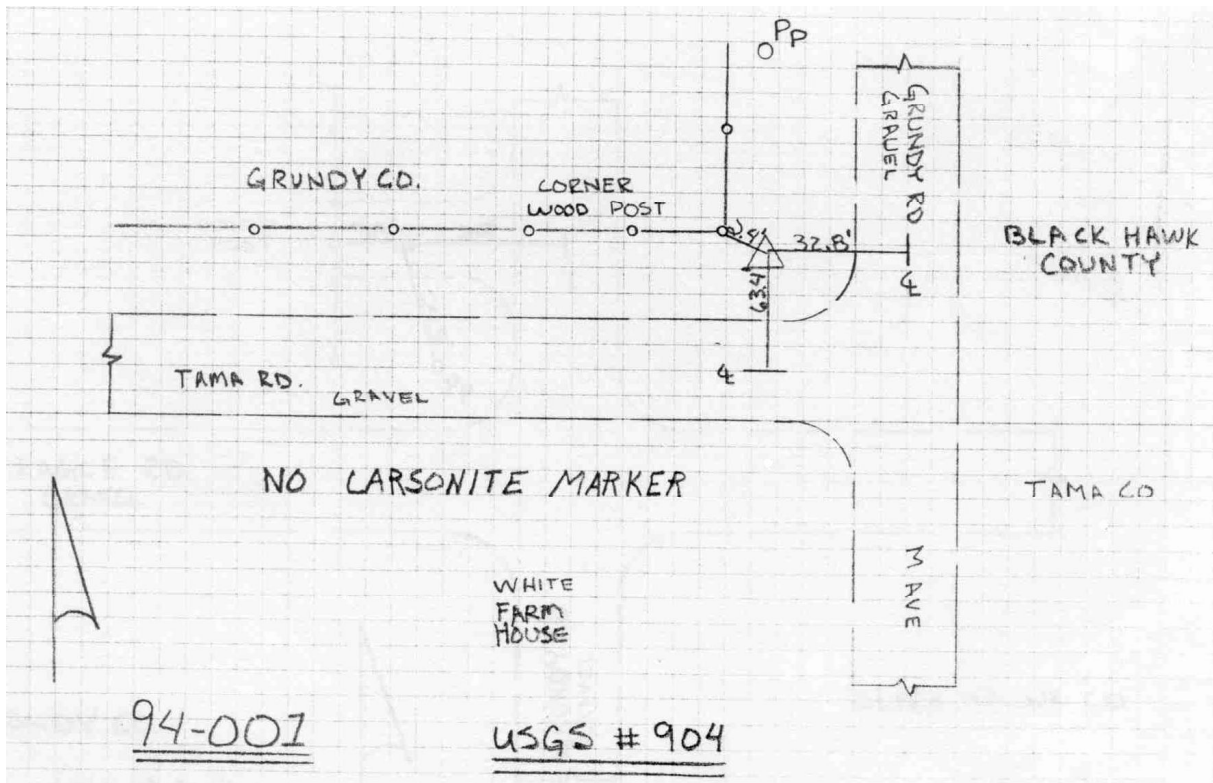
Latitude: **42°17'49.85159"N**

Longitude: **92°32'01.00356"W**

Mapping Angle: **0°39'18"**

Combination Scale Factor: **0.99992263**

**Monument Type:** The station mark is a standard disk stamped "No 904" and set in the top of a concrete post. USGS does not have a published elevation on record for this station.



*This document was prepared by DCI and GBC for use by Tama County, Iowa.*