

Tama County, Iowa
Iowa North Zone (1401)
Horiz. Datum: NAD83(NSRS2007)
Vert. Datum: NAVD 1988
US Survey Feet
2007

Point Name: **1027**

Designation: 94-026 BLACK HAWK CO (set by ASI in 1994)

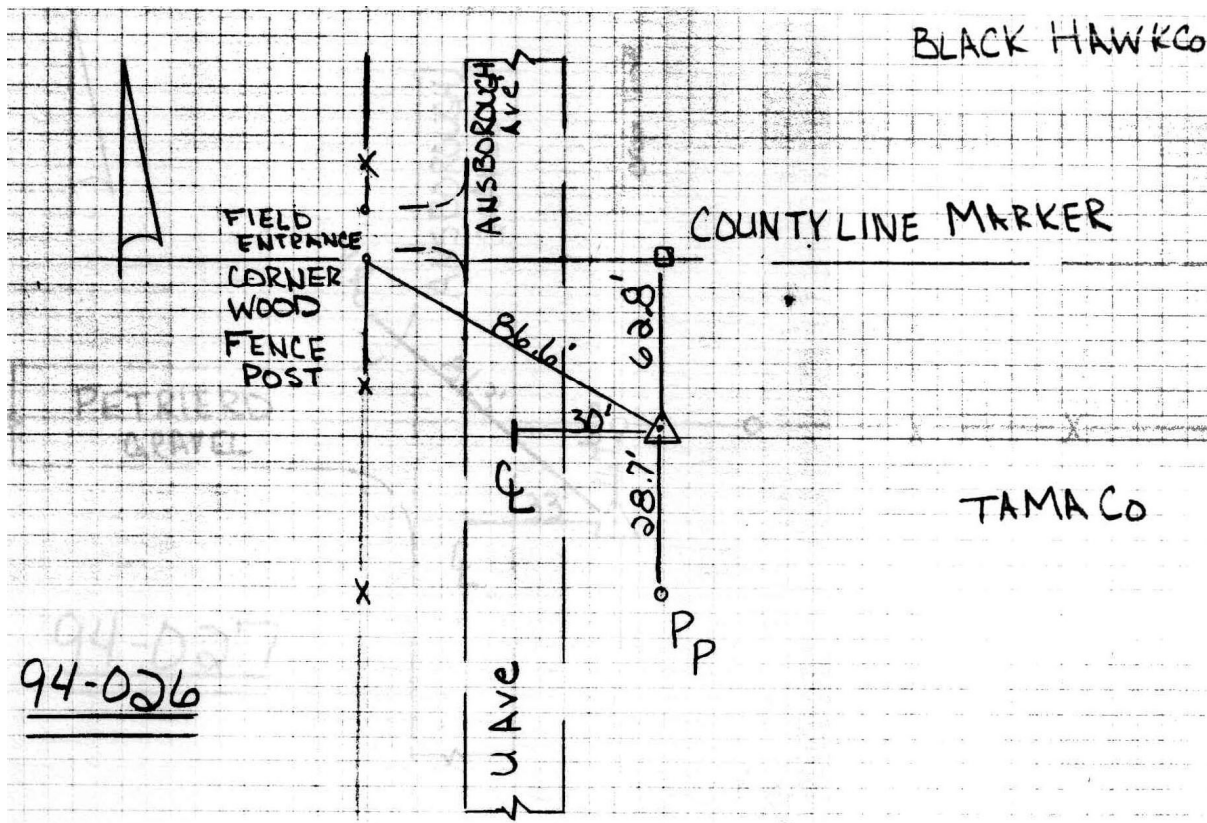
Northing: **3573369.12sft** Easting: **5225077.58sft**

Orthometric Height: **959.48sft** Ellipsoid Height: **856.78sft** **Geoid03**

Latitude: **42°17'49.92387"N** Longitude: **92°22'36.96067"W**

Mapping Angle: **0°45'40"** Combination Scale Factor: **0.99992527**

Monument Type: 5/8" dia. driven aluminum rod with a 2-1/2" dia aluminum cap and permanent magnet encased in a 5" dia. PVC pipe with an aluminum access cover.



This document was prepared by DCI and GBC for use by Tama County, Iowa.