

Tama County, Iowa
 Iowa North Zone (1401)
 Horiz. Datum: NAD83(NSRS2007)
 Vert. Datum: NAVD 1988
 US Survey Feet
2007

Point Name: **1032**

Designation: 2003-009 BENTON CO (set by DCI in 2003)

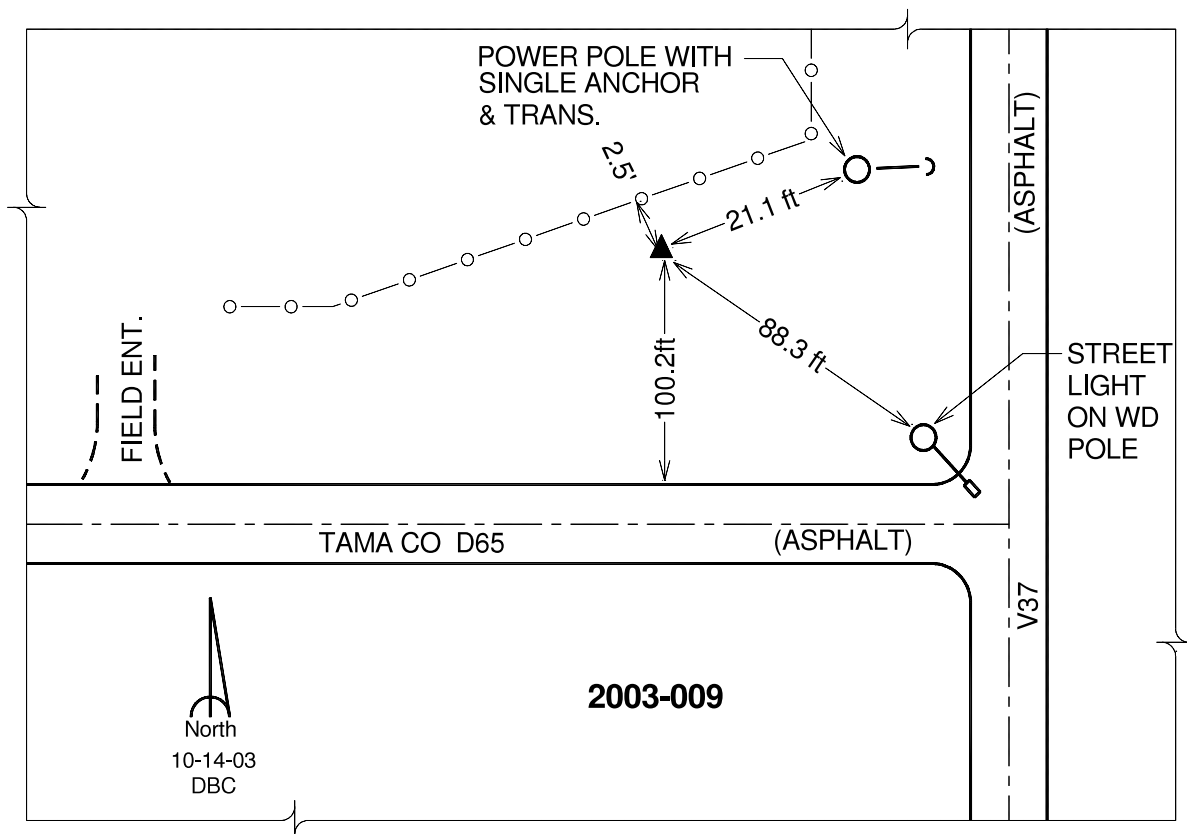
Northing: **3558087.59**sft Easting: **5246349.90**sft

Orthometric Height: **844.69**sft Ellipsoid Height: **742.26**sft **Geoid03**

Latitude: **42°15'16.08765"N** Longitude: **92°17'56.81482"W**

Mapping Angle: **0°48'50"** Combination Scale Factor: **0.99993580**

Monument Type: Berntsen Top Security Rod Monument with a 2-1/2" dia. domed survey cap and permanent magnet encased in a 5" dia.PVC pipe with a NGS style aluminum access cover.



This document was prepared by DCI and GBC for use by Tama County, Iowa.