

**Tama County, Iowa**  
Iowa North Zone (1401)  
Horiz. Datum: NAD83(NSRS2007)  
Vert. Datum: NAVD 1988  
US Survey Feet  
**2007**

Point Name: **1036**

**Designation:** 2003-006 BENTON CO (set by DCI in 2003)

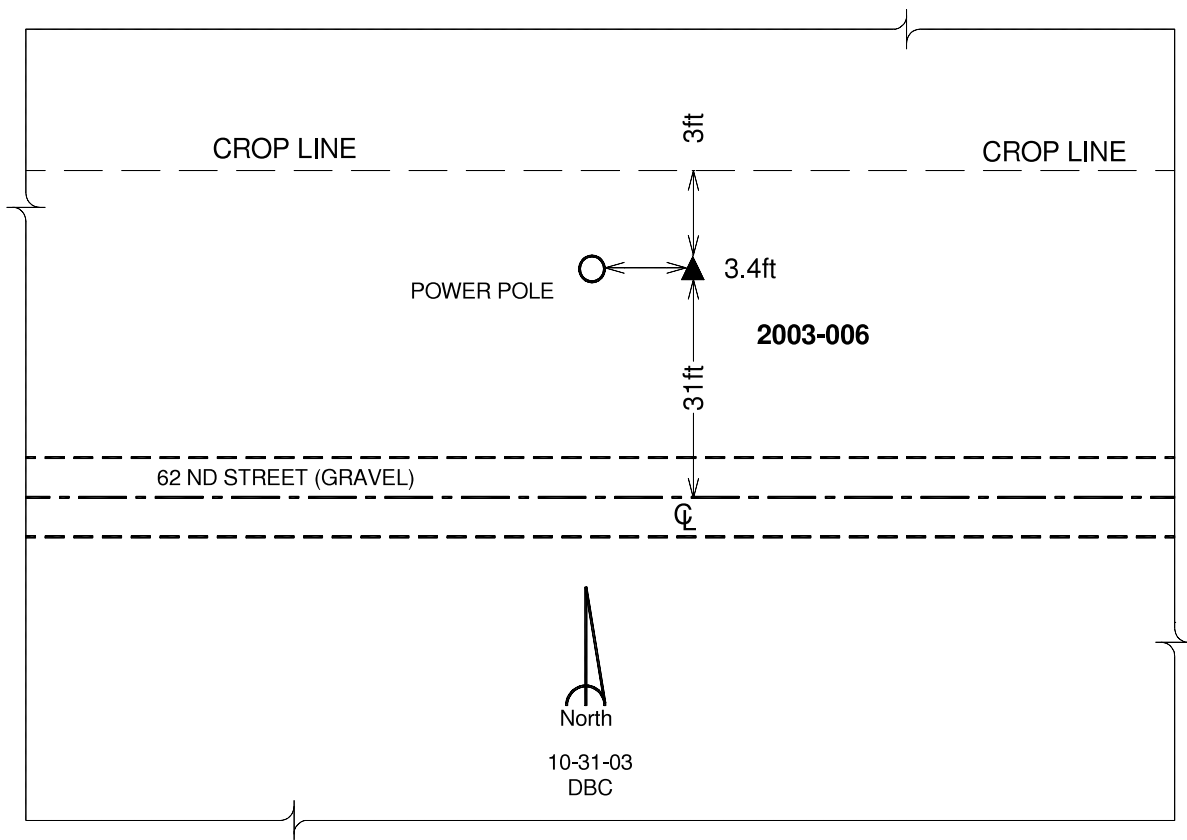
Northing: **3510310.91**sft Easting: **5247440.91**sft

Orthometric Height: **932.11**sft Ellipsoid Height: **829.30**sft **Geoid03**

Latitude: **42°07'24.00716"N** Longitude: **92°17'51.34439"W**

Mapping Angle: **0°48'54"** Combination Scale Factor: **0.99995063**

**Monument Type:** Berntsen Top Security Rod Monument with a 2-1/2" dia. domed survey cap and permanent magnet encased in a 5" dia. PVC pipe with a NGS style aluminum access cover.



*This document was prepared by DCI and GBC for use by Tama County, Iowa.*