

Tama County, Iowa
Iowa North Zone (1401)
Horiz. Datum: NAD83(NSRS2007)
Vert. Datum: NAVD 1988
US Survey Feet
2007

Point Name: **1039**

Designation: 2003-004 BENTON CO (set by DCI in 2003)

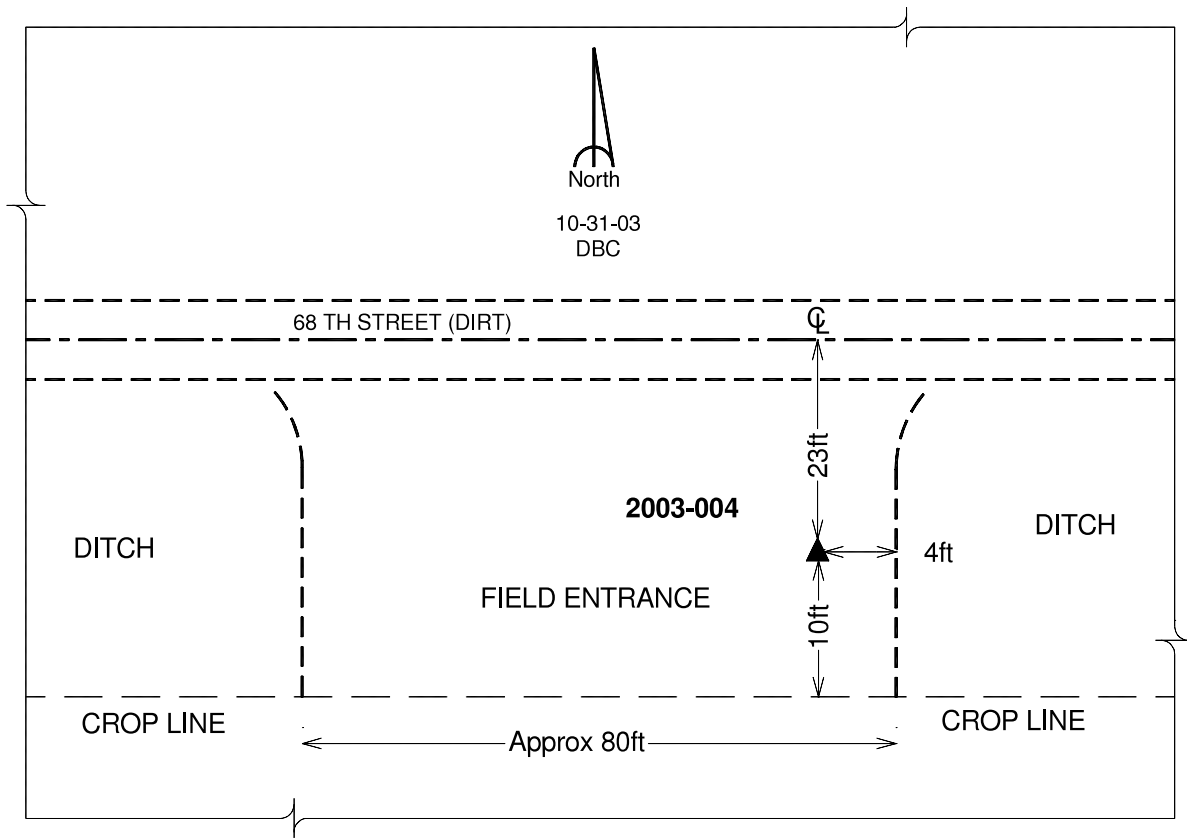
Northing: **3478574.94**sft Easting: **5249722.03**sft

Orthometric Height: **952.35**sft Ellipsoid Height: **849.19**sft **Geoid03**

Latitude: **42°02'10.20478"N** Longitude: **92°17'27.10038"W**

Mapping Angle: **0°49'10"** Combination Scale Factor: **0.99996516**

Monument Type: Berntsen Top Security Rod Monument with a 2-1/2" dia. domed survey cap and permanent magnet encased in a 5" dia. PVC pipe with a NGS style aluminum access cover.



This document was prepared by DCI and GBC for use by Tama County, Iowa.