

Tama County, Iowa
Iowa North Zone (1401)
Horiz. Datum: NAD83(NSRS2007)
Vert. Datum: NAVD 1988
US Survey Feet
2007

Point Name: **1040**

Designation: 2003-003 BENTON CO (set by DCI in 2003)

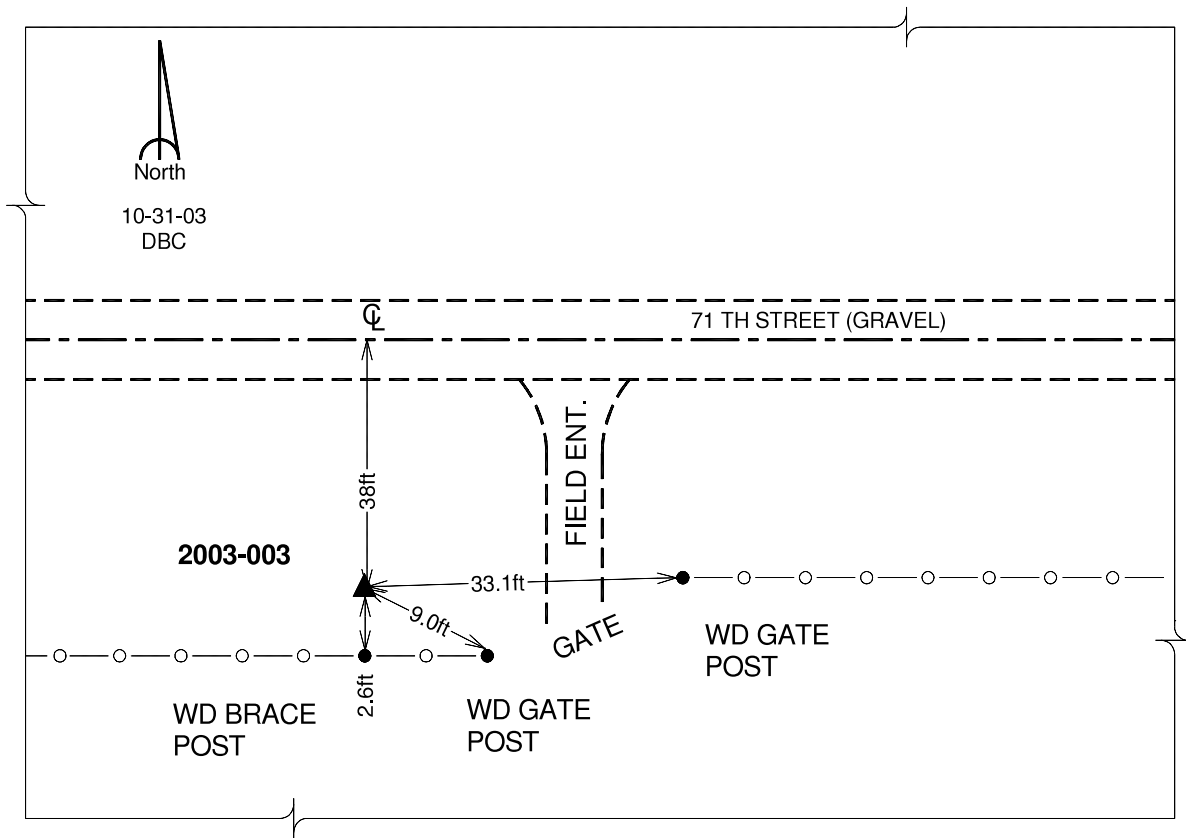
Northing: **3462771.94**sft Easting: **5248599.18**sft

Orthometric Height: **929.54**sft Ellipsoid Height: **826.09**sft **Geoid03**

Latitude: **41°59'34.26468"N** Longitude: **92°17'44.96122"W**

Mapping Angle: **0°48'58"** Combination Scale Factor: **0.99997480**

Monument Type: Berntsen Top Security Rod Monument with a 2-1/2" dia. domed survey cap and permanent magnet encased in a 5" dia. PVC pipe with a NGS style aluminum access cover.



This document was prepared by DCI and GBC for use by Tama County, Iowa.