

**Tama County, Iowa**  
Iowa North Zone (1401)  
Horiz. Datum: NAD83(NSRS2007)  
Vert. Datum: NAVD 1988  
US Survey Feet  
**2007**

Point Name: **1041**

**Designation:** 2003-002 BENTON CO (set by DCI in 2003)

Northing: **3447055.97**sft Easting: **5249081.95**sft

Orthometric Height: **849.91**sft Ellipsoid Height: **746.14**sft **Geoid03**

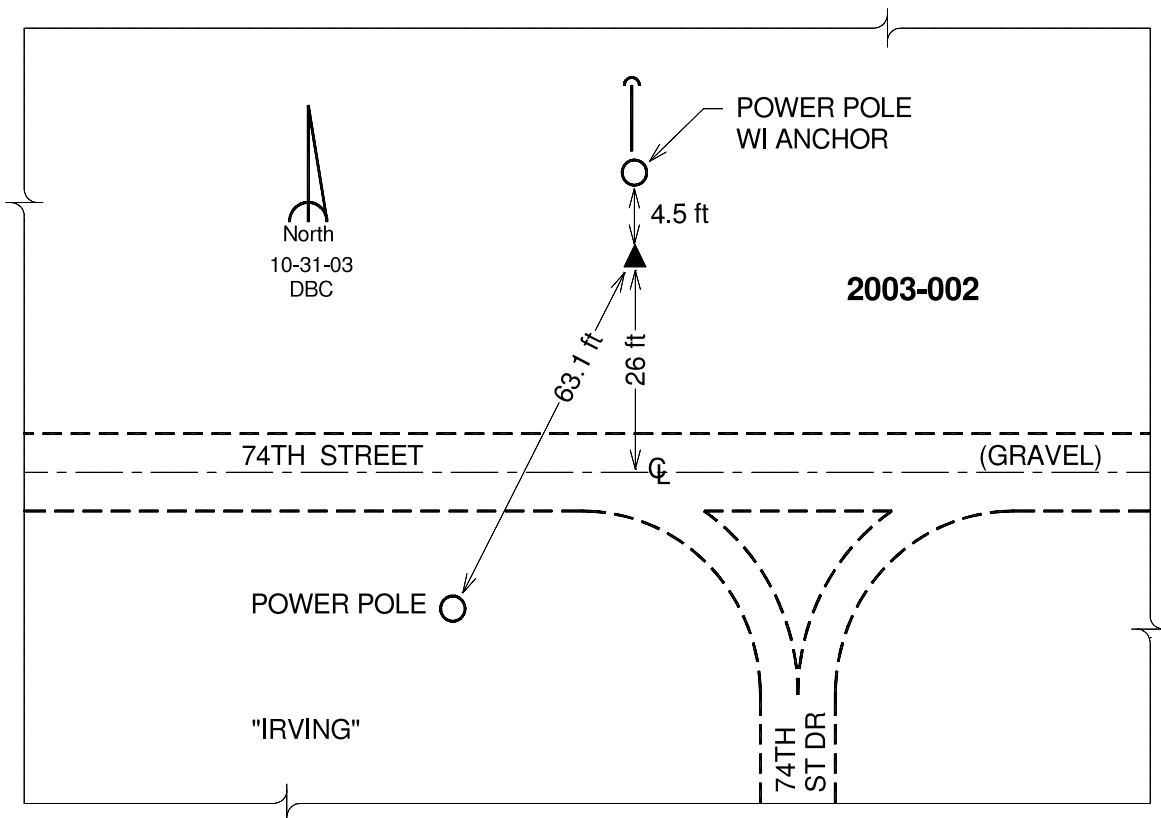
Latitude: **41°56'58.95805"N**

Longitude: **92°17'41.53549"W**

Mapping Angle: **0°49'00"**

Combination Scale Factor: **0.99998768**

**Monument Type:** Berntsen Top Security Rod Monument with a 2-1/2" dia. domed survey cap and permanent magnet encased in a 5" dia. PVC pipe with a NGS style aluminum access cover.



*This document was prepared by DCI and GBC for use by Tama County, Iowa.*